



Master Catalogue

VII EDITION

Micerium S.p.A.
Via G. Marconi, 83
16036 Avegno (GE) • Italy
Tel. +39 0185 7887 880
Fax +39 0185 7887 970
e-mail: hfo@micerium.it
orders:sales@micerium.it
<http://www.micerium.com>

V.A.T. CEE IT01199870104
Cap. Soc. int. Vers. 1.000.000 euro
Cod. Fiscale e nr. iscrizione Reg.Imprese
Ge n° 01199870104 – R.E.A.265808

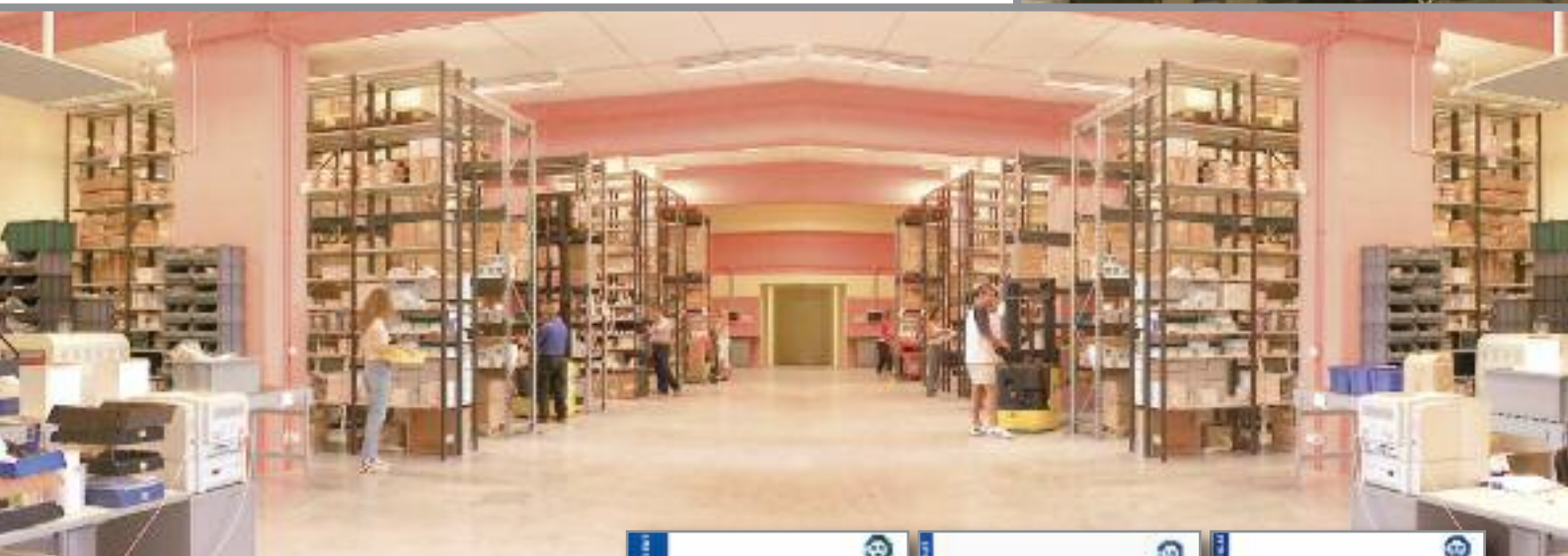




Dear customer,

Micerium S.p.A. is a company operating in the dental field for more than three decades, whose business is in the design and manufacture of medical devices for the dental industry, marketing of medical devices and products for the dental field under other or its own brand name of products for the dental industry.

MICERIUM S.p.A. refers to the quality as a fundamental principle for its activities. We believe that the term "quality" means to ensure our customers innovative products and services that meet or even exceed their expectations.



This level of excellence should not only be demonstrated by the existence of a quality system throughout the organization that meets the requirements of the UNI EN ISO 9001:2008, UNI EN ISO 13485:2012 and DIR 93/42 EEC - Annex II.3, Annex V and Annex VII (D.L. 25 January 2010 No. 37 integrated with upgrades) and other mandatory requirements, such as the American Good Manufacturing Practice (21 CFR 820.1 to 21 CFR 820,250) and the Canadian CMDR, but measured by the degree of satisfaction of their customers.



Q U A L I T Y



AESTHETICS

Enamel plus Composite	8	Tender Fiber	33
Stain, Instruments and Brushes	16	Temporary Resin	34
Flowable Composite	17	Ena Soft	35
Composite Finishing & Polishing	18	Discolouration treatment	36
Ena Post Glass Fiber Post	24	Bleaching system	38
Ena Cem Cement	26	Oral Hygiene	40
Adhesive and Etching	28	Sectional Matrix	42



LABORATORY

Resin	44	Pattern resin	53
Enamel plus Tender composite	46	Instruments & Tender Handsaw	54
Light Curing Units - Vacumix	50	Router & Electric saw	55
Alloy and Investment	51	Zircoshiny	56
Wax	52		

Index



Board Direction



Maria Picarelli
President
Chief Administrative
Officer and Human
Resources



Gisella Allemand Miceli
C.E.O.
R&D Coordinator
Aesthetics Department
Director Export Dep.



Eugenio Miceli
C.E.O.
Managing Director
Dental Department



Ottaviano Miceli
C.E.O.
Managing Director
Orthodontic & Implant
Department



**Michèle Allemand
de Frouchtman**
C.E.O.
Spain Area Manager

Export Department



Nathalie Ramponi
Head of customer service
International Sales
Seminar Specialist



Jana Dostalova
Sales Manager
Eastern Europe



Mario Schilman
Sales Manager
Hispanic Area



Aaran B.Y. Wan
Sales Manager
Asia (Far East)

Customer Service



Francesca Tanghetti
Customer Service



Valentina Bacigalupo
Customer Service



Sonia Grandi
Customer Service



Diego Conca
Quality Control



Paola Barberis
Safety Engineer

Quality & Safety

Packaging



Jolanda Picarelli
Packaging Manager



Daniela Castelli
Packaging



Roberta Cossu
Packaging



Sonia Accossu
Packaging



Sara Santi
Packaging

Direction assistants



Giuliana Bozzo
Correspondence and
filing



Claudia Masi
Correspondence and
purchasing

Accounting



Riccardo Mumenthaler
Customer Accounting



Laura Medici
Accounting



Fiorenza Martinotti
Accounting

Graphic & Internet



Gianluca Zeri
Computer Specialist



Giorgia Rea
Graphic Design
Responsible



Viviane Tsubaki
Graphic Designer

Invoicing Department & Shipping



Rita Correale
Invoicing



Alessandro Farinelli
Shipping



Diego Marzocchi
Shipping



Juan Carlos Mercado
Shipping

Micerium S.p.A. pursues a policy of continuous quality improvement, which is implemented with the involvement of each operating within the resource itself.

The management commit in deeply involved in developing and managing the necessary resources to meet those expectations, involving all internal and external corporate, including representatives and suppliers, with the aim to continuously improve the level of its professional staff, aimed at achieving customer satisfaction with product offerings and services more efficient and a consequent reduction in complaints and non-compliance.

All staff are committed to work best, to achieve the highest standards within the company and, to this aim, one of the objectives of Micerium is to maintain a high level of the working environment during time.

The aim of Micerium S.p.A. is also to propose to the dental industry high quality products that are used with modern and advanced techniques, and at the same time simple and reproducible. To this aim, another goal of Micerium is to point to both its group sales, and its customers training, helping to organize or support courses that allow an improvement of the level of professional dentists and dental technicians.

Micerium S.p.A.

Maria Picarelli

President

Aesthetics

VENEZIA





Aesthetics

- 8 Enamel plus HRi - HFO Composite
- 16 Stain, Instruments & Brushes
- 17 Flowable Composite
- 18 Composite Finishing and Polishing
- 24 Ena Post Glass Fiber Post
- 26 Ena Cem Cement
- 28 Adhesive and Etching
- 33 Tender Fiber
- 34 Temporary Resin
- 35 Ena Soft
- 36 Ena White discolouration treatment
- 38 Ena White 2.0 bleaching system
- 40 Oral Hygiene
- 42 Sectional Matrix

ENAMEL PLUS HRi BIO FUNCTION

Highly Biocompatible Composite for Posteriors

Composite system for direct and indirect technique, with mechanical and functional characteristics similar to natural enamel

CHARACTERISTICS

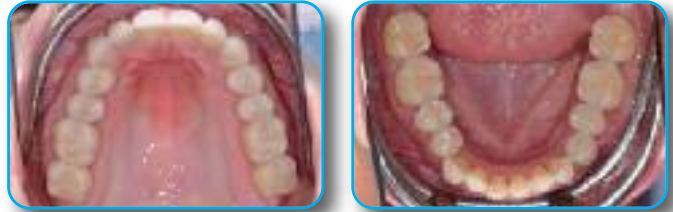
- Highly Biocompatible, does not contain Co-monomers nor Bis-GMA
- Similar abrasion to natural enamel
- Mechanical and functional characteristics similar to gold
- Ideal polishability and high gloss retention over time
- Ideal handling: it does not stick to the instrument
- Suitable for direct and indirect technique
- High Radiopacity
- Contains Fluoride



Initial case before rehabilitation



Final case after rehabilitation with direct technique in lower sector and indirect technique in upper sector



Completely biocompatible to guarantee a perfect integration in harmony with the human body without releasing any toxic substances. High stability resin matrix and absence of nanoparticles in the powders generated by abrasion phenomenon that could be absorbed by the body.

The UDMA and TCDDMDMA innovative formula is Bis-GMA free (monomer that can liberate Bisphenol-A (BPA), an organic compound that exhibits estrogenic properties in human body causing health problems). It does not contain nanoparticles in the glass filler: the effect on health of free powders generated by nanoparticles are still object of discussion as they are able to penetrate the cell membrane.

Ref	Description	Q.ty
CHR6FB	TRIAL KIT ENAMEL PLUS HRi BIO FUNCTION including 6 syringes 2,5 g 4 dentine: UD1 (A1), UD2 (A2), UD3 (A3), UD4 (A4) 1 universal enamel for anteriors: UE2 1 "Bio Function" enamel for posteriors: BF3	6x2,5g
CHRBFB1	Enamel Plus HRi Bio Function refill BF1	5g
CHRBFB2	Enamel Plus HRi Bio Function refill BF2	5g
CHRBFB3	Enamel Plus HRi Bio Function refill BF3	5g

Ref	Description	Q.ty
CHR6FBT	TRIAL KIT ENAMEL PLUS HRi BIO FUNCTION including 36 tips (6 tips x 6 shades) 4 dentine: UD1 (A1), UD2 (A2), UD3 (A3), UD4 (A4) 1 universal enamel for anteriors: UE2 1 "Bio Function" enamel for posteriors: BF3	6x6 pcs
CHRTBF1	Enamel Plus HRi Bio Function tips BF1	12x0,3g
CHRTBF2	Enamel Plus HRi Bio Function tips BF2	12x0,3g
CHRTBF3	Enamel Plus HRi Bio Function tips BF3	12x0,3g

Composite system for direct and indirect technique

Enamel-composite system to restore the function in a micro-invasive way respecting the neuromuscular system and getting an excellent aesthetic integration. Enamel shades subject to low abrasion that are comparable to natural enamel. Ideal for use in functional areas with direct or indirect technique and especially for prosthetic rehabilitations.

Three enamel shades are available:

- EF1 low value
- EF2 medium value
- EF3 high value



WEAR: COMPARATIVE ANALYSIS

UNIVERSITY OF CHIETI - PROF. CAMILLO D'ARCANDELO

Wear after 120.000 cycles with chewing machine vs zirconia	Wear Depth (mm)	Volume Loss (mm ³)	Antagonist Wear (mm)
Enamel plus HRi UE2 <i>Light Cured with Led</i>	0.485 (0.064) ^c	1.452 (0.245) ^d	0.010 (0.007)
Composite F* (enamel) <i>Light Cured with Led</i>	0.464 (0.069) ^c	0.972 (0.247) ^{b,c,d}	0.004 (0.002)
Enamel plus HRi Function EF3 <i>Light Cured with Led</i>	0.335 (0.069) ^b	0.529 (0.139) ^{a,b,c}	0.006 (0.001)
Enamel plus HRi UE2 <i>Light Cured with Laborlux**</i>	0.463 (0.063) ^c	1.016 (0.198) ^{c,d}	0.015 (0.013)
Composite F* (enamel) <i>Light Cured with Laborlux**</i>	0.459 (0.068) ^c	1.017 (0.239) ^{c,d}	0.016 (0.017)
Enamel plus HRi Function EF3 <i>Light Cured with Laborlux**</i>	0.276 (0.058) ^{a,b}	0.464 (0.191) ^{a,b}	0.016 (0.003)
Pressed Ceramic	0.303 (0.065) ^{a,b}	0.531 (0.143) ^{a,b,c}	0.002 (0.002)
Gold type III	0.219 (0.060) ^a	0.328 (0.140) ^a	0.004 (0.005)
Human Enamel	0.216 (0.070) ^a	0.404 (0.200) ^a	0.013 (0.004)

* reference composite chosen after identified as the best among the ones tested during the preliminary phase

** curing unit for laboratory; it cures with heat (70°C/80°C)

PHYSICAL DATA

- Vickers Hardness: 760 MPa
- Flexural Strength: 150 MPa
- Modulus of elasticity: 11.500 MPa
- Compressive Strength: 460 MPa

Ref	Description	Q.ty
CHR6FC	TRIAL KIT ENAMEL PLUS HRi FUNCTION including 6 syringes 2,5 g 4 dentine: UD1 (A1), UD2 (A2), UD3 (A3), UD4 (A4) 1 universal enamel for anteriors: UE2 1 "Function" enamel for posteriors: EF3	6x2,5g
CHREF1	Enamel Plus HRi Function refill EF1	5g
CHREF2	Enamel Plus HRi Function refill EF2	5g
CHREF3	Enamel Plus HRi Function refill EF3	5g

Ref	Description	Q.ty
CHR6FCT	TRIAL KIT ENAMEL PLUS HRi FUNCTION including 36 tips (6 tips x 6 shades) 4 dentine: UD1 (A1), UD2 (A2), UD3 (A3), UD4 (A4) 1 universal enamel for anteriors: UE2 1 "Function" enamel for posteriors: EF3	6x6 pcs
CHRTEF1	Enamel Plus HRi Function tips EF1	12x0,3g
CHRTEF2	Enamel Plus HRi Function tips EF2	12x0,3g
CHRTEF3	Enamel Plus HRi Function tips EF3	12x0,3g

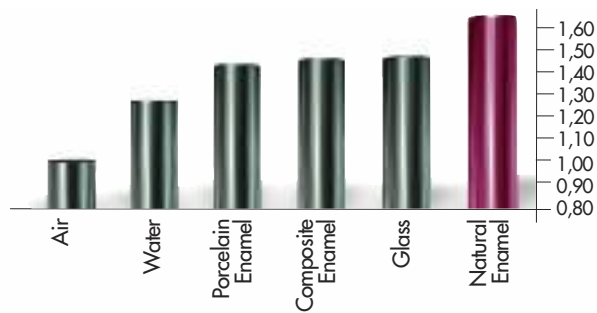
THE PROBLEM

THE REFRACTION OF COMPOSITE & CERAMIC MATERIALS...



"Glass Effect" lowers the value of the restoration with a gray halo on the margin (dark line)

RELATIVE REFRACTIVE INDEX OF LIGHT (n)



The relative refractive indexes of common materials measured at a temperature of 20°C and with a 589 nm wavelength light indicates the deviation and speed reduction of the light that crosses a translucent area (Vanini Mangani Klimovskaia "Conservative Restoration of Anterior Teeth" Acme 2005)

HRi: THE TRUE ENAMEL



HRi Enamel veneers showing natural effects



Application of dentine and opalescent OBN

Different thicknesses of Enamel plus HRi change in shade in the same manner as Natural Enamel would in the same thickness.

Thickness of 0,6 mm allows ideal translucency

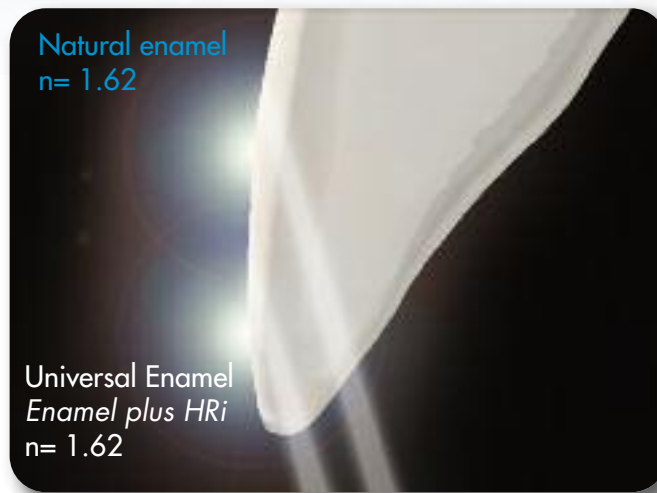


UE1 low value (amber)

UE2 medium value

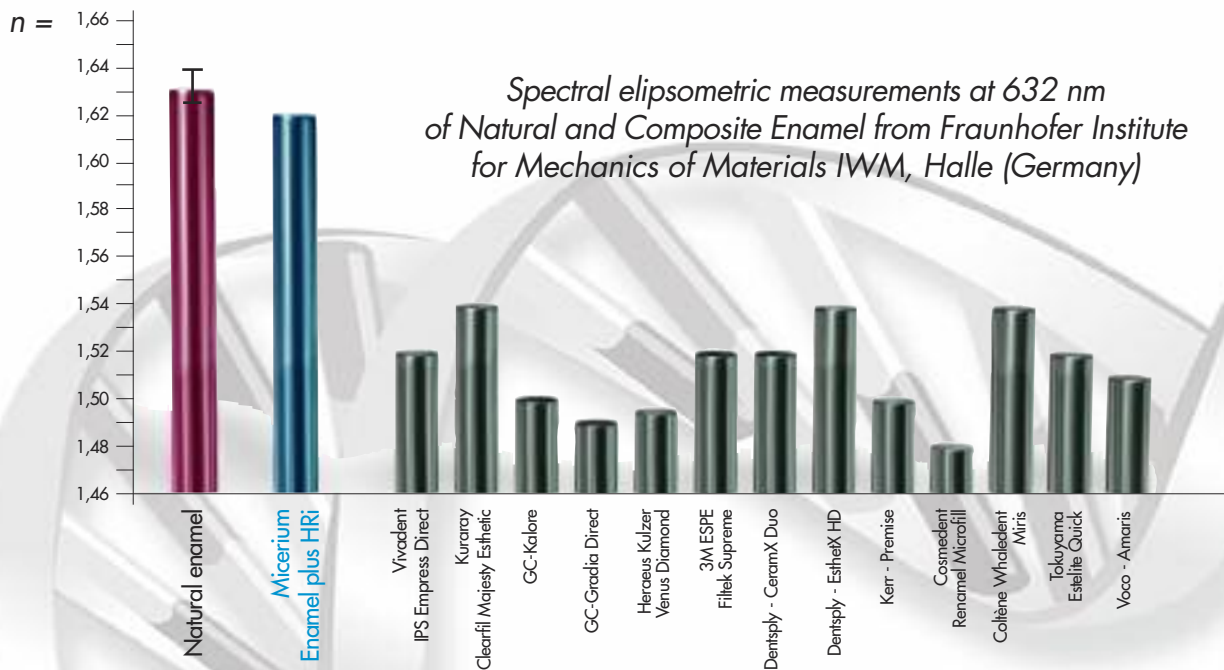
UE3 high value (for children or bleached teeth)

... THE SAME REFRACTIVE INDEX AS NATURAL ENAMEL

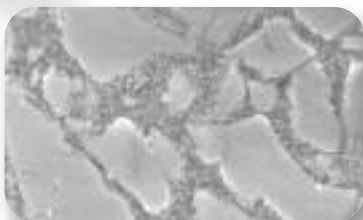


Invisible margins, in **HRi** restoration, using the same thickness of the natural enamel

RELATIVE REFRACTIVE INDEX



NANOTECHNOLOGY REM



• Composition FILLING (80% WEIGHT - 63% VOLUME)

- Surface treated nano zirconium oxide with high refractive index (12% in weight)
- New type of filling glass with high refractive index (68% in weight)

• Ideal physical data

for every type of direct or indirect restoration

- Vickers Hardness 700 MPa
- Modulus of elasticity 14.500 MPa
- Flexural Strength 170 MPa
- Compressive strength 450 MPa
- High radiopacity 600% Al



The HRi project has been devised from Dr. L.Vanini and developed in collaboration with Dr. T. Niem (Patent Pending)

This project (HA-Project-Nr: 130/07-01) has received special funding from the State of Hessen, co-financed by funds of the European Union (European Social Fund - ESF) for scientific innovation and advancement.

ENAMEL PLUS HRi

Characteristics and clinical cases

TECHNOLOGICAL ADVANTAGES

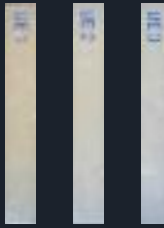
UNIVERSAL DENTINE



- **New dentine** with fluorescence and increased translucency calibrated to natural dentine
- **Ultra-light Dentine:** UDO and UDO,5 for bleached teeth

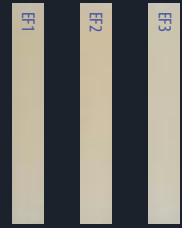
DENTINE

UNIVERSAL ENAMEL FOR ANTERIORS



- Universal** (low, medium and high value)
- **Invisible margin thanks to high refraction index** no "glass effect" lowering the value of the restoration
 - **Opalescent effect blue and amber created from HRi Enamel** (Transparency 30% until 0,8 mm)
- Function** (low, medium and high value)
- **Low abrasion** ideal for posteriors

FUNCTION ENAMEL FOR POSTERIORS



ENAMEL

ADDITIONAL SHADES FOR MASTER TECHNIQUE



- **Characterization and intensive effect** created by intensive enamel (IM, IWS, IW) and opalescent amber (OA)
- **Opalescent blue effect** enhanced by Opalescent OBN

ADDITIONAL SHADE

OPERATING ADVANTAGES: SIMPLE TECHNIQUE

"JUST ENAMEL" TECHNIQUE

using Enamel plus HRi universal enamel

"BASIC" TECHNIQUE

using Enamel plus HRi, dentine and enamel

"MASTER" TECHNIQUE

additional shades for opalescence, intensive and characterization



Enamel plus HRi KIT



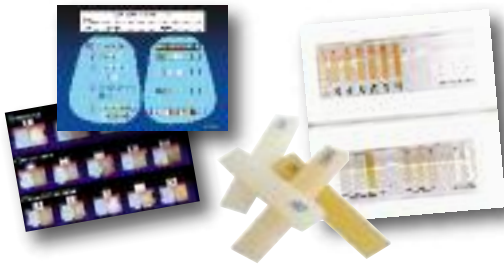
CHR15



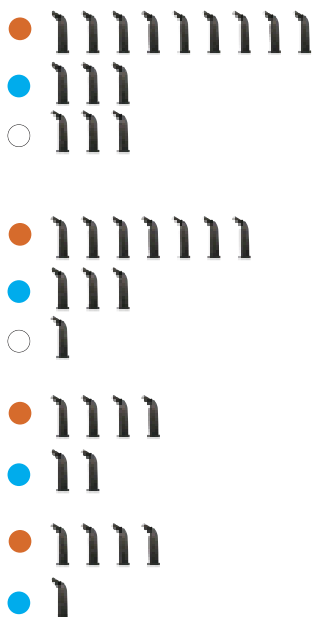
CHR6

Ref	Description	Q.ty
CHR15	ENAMEL PLUS HRi Complete Kit including 15 syringes 5 g with holder 9 dentine: UDO, UDO,5, UD1 (A1), UD2 (A2), UD3 (A3), UD3,5 (A3,5), UD4 (A4), UD5, UD6 3 universal enamel: UE1, UE2, UE3 3 intensive enamel: White (IW), White Spot (IWS), Milky (IM)	15x5g
CHR11	ENAMEL PLUS HRi Complete Kit including 11 syringes 5 g with holder 7 dentine: UDO, UD1 (A1), UD2 (A2), UD3 (A3), UD4 (A4), UD5, UD6 3 universal enamel: UE1, UE2, UE3 1 intensive enamel: White Spot (IWS)	11x5g
CHR6*	TRIAL KIT ENAMEL PLUS HRi including 6 syringes 2,5 g with holder 4 dentine: UD1 (A1), UD2 (A2), UD3 (A3), UD4 (A4) 2 universal enamel: UE2, UE3	6x2,5g
CHR5B	"Bleach" KIT ENAMEL PLUS HRi including 5 syringes 2,5 g with holder 4 dentine: UDO, UDO,5, UD1 (A1), UD2 (A2) 1 universal enamel: UE3	5x2,5g

**It is possible to replace UE3 with UE1 (Ref. Kit CHR6B)*



Ref	Description	Q.ty
CSG15	Enamel plus HRi complete shade guide	15 shades
HFOMAP2	Colour chart for colour registration	50 sheets
PLEXI26D	Plexiglass syringe holder 26 holes	1 pc
PLEXI9D	Plexiglass syringe holder 9 holes	1 pc



Ref	Description	Q.ty
CHR15T	ENAMEL PLUS HRi Complete Kit Tips including 90 tips (6 tips x 15 shades) 9 dentine: UDO, UDO,5, UD1 (A1), UD2 (A2), UD3 (A3), UD3,5 (A3,5), UD4 (A4), UD5, UD6 3 universal enamel: UE1, UE2, UE3 3 intensive enamel: White (IW), White Spot (IWS), Milky (IM)	15x6 pcs
CHR11T	ENAMEL PLUS HRi Complete Kit Tips including 66 tips (6 tips x 11 shades) 7 dentine: UD1 (A1), UD2 (A2), UD3 (A3), UD3,5 (A3,5), UD4 (A4), UD5, UD6 3 universal enamel: UE1, UE2, UE3 1 intensive enamel: White Spot (IWS)	11x6 pcs
CHR6T*	ENAMEL PLUS HRi TRIAL KIT Tips including 36 tips (6 tips x 6 shades) 4 dentine: UD1(A1), UD2(A2), UD3(A3), UD4(A4) 2 universal enamel: UE2, UE3	6x6 pcs
CHR5BT	ENAMEL PLUS HRi "Bleach" KIT Tips including 30 tips (6 tips x 5 shades) 4 dentine: UDO, UDO,5, UD1 (A1), UD2 (A2) 1 universal enamel: UE3	5x6 pcs

**It is possible to replace UE3 with UE1 (Ref. Kit CHR6BT)*



ENAMEL PLUS HRi REFILLS



Ref	Description	Syringes
CHRUE1	Enamel plus HRi universal enamel UE1	5 g
CHRUE2	Enamel plus HRi universal enamel UE2	5 g
CHRUE3	Enamel plus HRi universal enamel UE3	5 g
CHRIW	Enamel plus HRi intensive enamel White	5 g
CHRIM	Enamel plus HRi intensive enamel Milky	5 g
CHRIWS	Enamel plus HRi int.enamel White Spot	5 g
CHRU0	Enamel plus HRi dentine UD0	5 g
CHRU0,5	Enamel plus HRi dentine UD0,5	5 g
CHRU1	Enamel plus HRi dentine UD1 (A1)	5 g
CHRU2	Enamel plus HRi dentine UD2 (A2)	5 g
CHRU3	Enamel plus HRi dentine UD3 (A3)	5 g
CHRU3,5	Enamel plus HRi dentine UD3,5 (A3,5)	5 g
CHRU4	Enamel plus HRi dentine UD4 (A4)	5 g
CHRU5	Enamel plus HRi dentine UD5	5 g
CHRU6	Enamel plus HRi dentine UD6	5 g
CHFOA	Enamel Plus opalescent enamel Amber	5 g
CHFOBN	Enamel Plus opal.enamel Blue Natural	5 g

● Universal Enamel
 ○ Intensive
 ● Dentine
 ● Opalescent

Ref	Description	Tips
CHRTUE1	Enamel plus HRi universal enamel UE1	12x0,3g
CHRTUE2	Enamel plus HRi universal enamel UE2	12x0,3g
CHRTUE3	Enamel plus HRi universal enamel UE3	12x0,3g
CHRTIW	Enamel plus HRi intens. enamel White	12x0,3g
CHRTIM	Enamel plus HRi intensive enamel Milky	12x0,3g
CHRTIWS	Enamel plus HRi int. enamel White Spot	12x0,3g
CHRTUD0	Enamel plus HRi tips UD0	12x0,3g
CHRTUD0,5	Enamel plus HRi tips UD0,5	12x0,3g
CHRTUD1	Enamel plus HRi tips UD1 (A1)	12x0,3g
CHRTUD2	Enamel plus HRi tips UD2 (A2)	12x0,3g
CHRTUD3	Enamel plus HRi tips UD3 (A3)	12x0,3g
CHRTUD3,5	Enamel plus HRi tips UD3,5 (A3,5)	12x0,3g
CHRTUD4	Enamel plus HRi tips UD4 (A4)	12x0,3g
CHRTUD5	Enamel plus HRi tips UD5	12x0,3g
CHRTUD6	Enamel plus HRi tips UD6	12x0,3g
CHFTOA	Enamel Plus opalescent enamel Amber	12x0,3g
CHFTOBN	Enamel Plus opal.enamel Blue Natural	12x0,3g

SYRINGE FOR TIPS

Autoclavable precision syringe for tips

Facilitates the measurement of the needed amount of composite.



Ref	Description	Q.ty
COSSIR	Autoclavable precision syringe for tips	1 pc

Microhybrid, radiopaque light curing composite

"HFO" the classical composite for direct and indirect aesthetic reconstructions.

- Fluorescent dentine calibrated to the natural tooth
- Generic Enamels: three values to reproduce elderly (GE1), adult (GE2) and young (GE3) teeth
- Opalescent and Intensive enamels for reproducing opalescent and characterization of the natural enamel

Ref	Description	Syringes
CHFGE1	Enamel Plus HFO generic enamel GE1	5 g
CHFGE2	Enamel Plus HFO generic enamel GE2	5 g
CHFGE3	Enamel Plus HFO generic enamel GE3	5 g
CHFOW	Enamel Plus HFO opalescent enamel White	5 g
CHFOG	Enamel Plus HFO opalescent enamel Gray	5 g
CHFOA	Enamel Plus HFO opalescent enamel Amber	5 g
CHFOBN	Enamel Plus HFO opalescent Blue natural	5 g
CHFIM	Enamel Plus HFO intensive Milky	5 g
CHFIW	Enamel Plus HFO intensive White	5 g
CHFUD1	Enamel plus HFO dentine UD1 (A1)	5 g
CHFUD2	Enamel plus HFO dentine UD2 (A2)	5 g
CHFUD3	Enamel plus HFO dentine UD3 (A3)	5 g
CHFUD3,5	Enamel plus HFO dentine UD3,5 (A3,5)	5 g
CHFUD4	Enamel plus HFO dentine UD4 (A4)	5 g
CHFUD5	Enamel plus HFO dentine UD5	5 g
CHFUD6	Enamel plus HFO dentine UD6	5 g
COSHFOB1	Enamel Plus HFO dentine B1	5 g
COSHFOB2	Enamel Plus HFO dentine B2	5 g
COSHFOB3	Enamel Plus HFO dentine B3	5 g
COSHFOB4	Enamel Plus HFO dentine B4	5 g
COSHFOC1	Enamel Plus HFO dentine C1	5 g
COSHFOC2	Enamel Plus HFO dentine C2	5 g
COSHFOC3	Enamel Plus HFO dentine C3	5 g
COSHFOC4	Enamel Plus HFO dentine C4	5 g
COSHFOD3	Enamel Plus HFO dentine D3	5 g



Ref	Description	Q.ty
CHF15	ENAMEL PLUS HFO Complete Kit including: 15 syringes 5 g with holder 7 dentine: UD1 (A1), UD2 (A2), UD3 (A3), UD3,5 (A3,5), UD4 (A4), UD5, UD6 3 generic enamel: GE1, GE2, GE3 3 opalescent enamel: OBN, OA, OW 2 intensive enamel: White (IW), Milky (IM)	15x5g
CHF7	TRIAL KIT ENAMEL PLUS HFO including: 7 syringes 2,5 g with holder 4 dentine: UD2 (A2), UD3 (A3), UD4 (A4), UD5 2 generic enamel: GE2, GE3 1 opalescent enamel: OBN	7x2,5g

*Available also in unidose Tips Kit (Ref. CHF15T) and 12 pcs refill (Ref. CHFTGE1, CHFT...)

SYRINGE/TIPS HEATER

ENA HEAT Composite Heating Conditioner

It warms up the composite at the temperature of approx. 39°C, making the material more flowable and reducing the stress in the extrusion from the syringe and stratification phases. In this way, this reduces the risk of separation between the matrix and filler, it improves the biomechanical characteristics of the composite and it avoids bubbles. It is possible to regulate the temperature at 55°C to obtain even more flowable material for cementation. With 6 spaces for syringes and 4 spaces for tips. Also for warming up sodium hypochlorite and anesthetic.



Ref	Description	Q.ty
CHC3	COMPOSITE HEATING CONDITIONER ENA HEAT 110-240V, 50-60 Hz, 500mA Allows to use composite at the ideal temperature of 39°C for modelling and 55°C for cementation	1 pc

ENAMEL PLUS STAIN & INSTRUMENTS

Fluorescent Composite Stains

Unique fluorescent stains used for characterization in both the dental practice and laboratory. Due to high fluorescence, they naturally integrate with the natural tooth. Stains can be used alone or mixed with the composite without changing its fluorescent characteristics.



COSSTAINKIT

MICERIUM BRUSHES FOR COMPOSITE MANIPULATION



Ref	Description	Q.ty
COSSTAINKIT	ENAMEL PLUS STAIN KIT Fluorescent stains in syringe: white, yellow, orange, blue, brown, dark brown Brushes (2 type C - 2 type F - 2 type M)	6x2g 6 pcs
COSSTAIN1N	Stain refill white	2 g
COSSTAIN3N	Stain refill blue	2 g
COSSTAIN4N	Stain refill brown	2 g
COSSTAIN5N	Stain refill dark brown	2 g
COSSTAIN6N	Stain refill black	2 g
COSSTAIN7N	Stain refill yellow	2 g
COSSTAIN8N	Stain refill orange	2 g
COSSTAIN T	Stain refill transparent	2 g
COSSTAINO1	Mixing palette with cover for improving composite modelling	1 pc
COSPEN11	Brush C for stains	1 pc
COSPEN12	Brush F for fossa	1 pc
COSPEN13	Brush M for manipulation	1 pc
TPENS	Soft white silicone brush with small tip for composite handling	5 pcs
TPENN	Hard black silicone brush with small tip for composite handling	5 pcs
TPENMC	Silicone brush blue tip with metal handle 45°/45° sterilizable for composite handling	5 pcs
TPENMS	Silicone brush blue tip with metal handle 90°/180° sterilizable for composite handling	5 pcs
TPENMP	Silicone brush blue tips refill	5 pcs
TLV1	Composite application instrument for anteriors including 1 fixed spatula 1 extra flexible grey spatula 1 flexible white spatula	1 pc 1 pc 1 pc
TLV2	Composite application instrument for posteriors	1 pc
TRAW	Flexible tip white	2 pcs
TRAG	Ultra flexible grey tip	2 pcs

ENAMEL PLUS HRi FLOW^{HF}

Material to be used in posteriors as cavity liner for direct and indirect restorations (before taking the impression) and in anteriors for class V.

- Highly Filled
- Higher Viscosity & Elasticity
- Higher Radiopacity & High Physical Properties
- No bubbles



PHYSICAL CHARACTERISTICS

	FILLER (Weight) %	VICKERS HARDNESS MPa	YOUNG MODULUS MPa	FLEXURAL STRENGTH MPa	COMPRESSIVE STRENGTH MPa	RADIOCAPACITY
Flow HF	77	770	13485	148	394	210% Al
Standard Flow	55	350	6000	120	350	30% Al

Ref	Description	Q.ty
CHR1F	ENAMEL PLUS HRi FLOW INTRO KIT Dentine syringe: UD1 (A1), UD2 (A2), UD3 (A3), UD3,5 (A3,5), UD4 (A4), UD5, UD6. Black tips ø 1,2 mm Plexiglass holder	7x2 g 25 pcs 1 pc
CHRFUDO	HRi Flow UDO refill + 3 tips	2 g
CHRFUDO,5	HRi Flow UDO,5 refill + 3 tips	2 g
CHRFUD1	HRi Flow UD1 (A1) refill + 3 tips	2 g

Ref	Description	Q.ty
CHRFUD2	HRi Flow UD2 (A2) refill + 3 tips	2 g
CHRFUD3	HRi Flow UD3 (A3) refill + 3 tips	2 g
CHRFUD3,5	HRi Flow UD3,5 (A3,5) refill + 3 tips	2 g
CHRFUD4	HRi Flow UD4 (A4) refill + 3 tips	2 g
CHRFUD5	HRi Flow UD5 refill + 3 tips	2 g
CHRFUD6	HRi Flow UD6 refill + 3 tips	2 g
CHRF25	Tips 1,2 mm	25 pcs
PLEX11	Plexiglass holder x 11 Flow syringe holes	1 pc

Low viscosity flowable composite



ENAMEL PLUS HFO FLOW

Ref	Description	Q.ty
CHF1F	ENAMEL PLUS HFO FLOW INTRO KIT Dentine syringe: UD1 (A1), UD2 (A2), UD3 (A3), UD3,5 (A3,5), UD4 (A4), UD5, UD6. Black tips ø 1,2 mm Plexiglass holder	7x2 g 25 pcs 1 pc
CHFFUD1	HFO Flow UD1 (A1) refill + 3 tips	2 g
CHFFUD2	HFO Flow UD2 (A2) refill + 3 tips	2 g
CHFFUD3	HFO Flow UD3 (A3) refill + 3 tips	2 g
CHFFUD3,5	HFO Flow UD3,5 (A3,5) refill + 3 tips	2 g
CHFFUD4	HFO Flow UD4 (A4) refill + 3 tips	2 g
CHFFUD5	HFO Flow UD5 refill + 3 tips	2 g
CHFFUD6	HFO Flow UD6 refill + 3 tips	2 g
COSHF3	HFO Flow B3 refill + 3 tips	2 g
COSHF4	HFO Flow B4 refill + 3 tips	2 g
CHFF25	Black tips ø 0,8 mm	25 pcs

Highly flowable body with high elasticity and calibrated light diffusion that reproduces protein layer of natural tooth

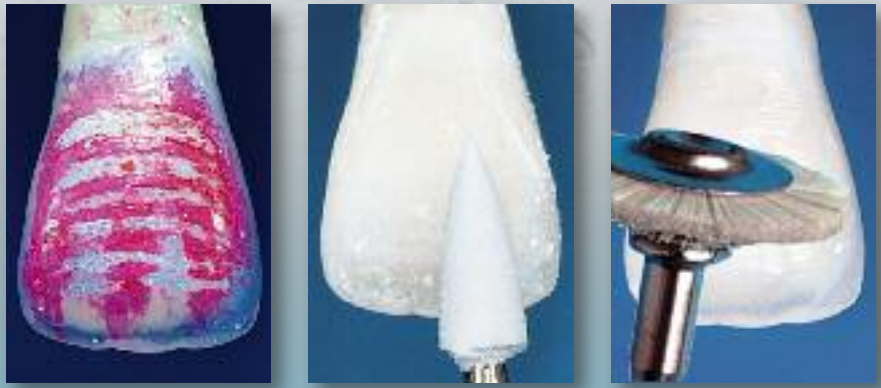
- Increases the internal light diffusion in direct and indirect restorations, reducing the decrease in value typical of the vitreous masses (no need with HRi Universal Enamel)
- Increases the dentine fluorescence of non vital teeth.

GLASS CONNECTOR



Ref	Description	Q.ty
COSHFOGFC	Enamel plus HFO Glass Connector + 3 tips	1 g

Shiny



Correction of surface tooth geography

Finishing and polishing: Shiny14 diamond rubber point, Shiny A 3 μ and Shiny B 1 μ diamond paste with brushes

Micerium provides everything needed for finishing and polishing of direct aesthetic restorations, laboratory veneers, inlays and crowns made in composite.

THE SYSTEM INCLUDES

- Diamond paste: SHINY A 3 μ , SHINY B 1 μ
- Aluminium oxide paste SHINY C
- Air Block SHINY G
- Brushes and felts SHINY S, SHINY F
- Pre-polishing rubber point SHINY14 & SHINY33
- Finishing accessories

SURFACE TREATMENT

	Vickers Hardness	Deviat.
Enamel plus HRi microhybrid	55	1,2
HRi microhybrid (a.b.+d.p.)	+10%	0,8
Microfill	18-30	4

Surface treatment: Vickers hardness and its deviation from standard values (a.b.=Air Block • d.p.=Diamond Paste).



ENAMEL PLUS SHINY KIT



Aluminium oxide paste Shiny C with felt wheel; restoration finished and polished under direct light (left) and under polarized light (right)



Ref	Description	Q.ty
COSSHINYKIT	SHINY FINISHING KIT	
	Diamond paste SHINY A 3 micron	2 g
	Diamond paste SHINY B 1 micron	2 g
	Shiny paste SHINY C	35 g
	Air Block SHINY G	4 pcs
	SHINY Burs	4 pcs
	Goat hair brushes RA Shiny S	3 pcs
	Varnish SHINY	3 ml
	SHINY 4... brush for posteriors	3 pcs
	SHINY Strips (diamond 5...)	4 pcs
	SHINY Strips (paper M...)	16 pcs
	SHINY Discs	12 pcs
	Felt disc SHINY FD	5 pcs
	Felt wheel SHINY F	5 pcs
	Rubber point SHINY 14	2 pcs
	Mandrel RA	2 pcs
	Disposable brushes	10 pcs
	Handle for brushes	1 pc



COSSHINY+G	POLISHING PASTE SHINY KIT	
	Diamond paste SHINY A 3 micron	2 g
	Diamond paste SHINY B 1 micron	2 g
	Shiny paste SHINY C	35 g
	Goat hair brushes RA Shiny S	3 pcs
	Felt disc SHINY FD	3 pcs
	Felt wheel SHINY F	3 pcs
	Mandrel RA	1 pc
	Air Block SHINY G	2 tips
	Rubber point SHINY 14	1 pc
	SHINY 4... brush for posteriors	2 pcs
	SHINY Strips (diamond 5...)	4 pcs
	SHINY Strips (paper M...)	4 pcs



COSSHINY-Y+G	POLISHING PASTE SHINY MINI KIT	
	Diamond paste SHINY A 3 micron	0,5 g
	Diamond paste SHINY B 1 micron	0,5 g
	Shiny paste SHINY C	4 g
	Goat hair brushes RA Shiny S	2 pcs
	Mandrel RA	1 pc
	Felt wheel SHINY F	2 pcs
	Rubber point SHINY 14	1 pc
	Air Block SHINY G	2 tips
	SHINY 4... brush for posteriors	1 pc
	SHINY Strips (diamond 5...)	2 pcs
	SHINY Strips (paper M...)	2 pcs

TSY	FINISHING SHINY KIT FOR LABORATORY	
	Paste SHINY A	0,5 g
	Paste SHINY B	0,5 g
	Paste SHINY C	4 g
	Tip Glycerine	1 pc
	Paper cone with mandrel	1 pc
	Goat brush Shiny S-HP	1 pc
	Felt Shiny F-HP	1 pc
	Carbide Bur FG	1 pc
	Green carborundum bur HP	1 pc
	Diamond bur HP (D717-D725-D727)	3 pcs
	Diamond disc 2 sides 0,15mm D751	1 pc

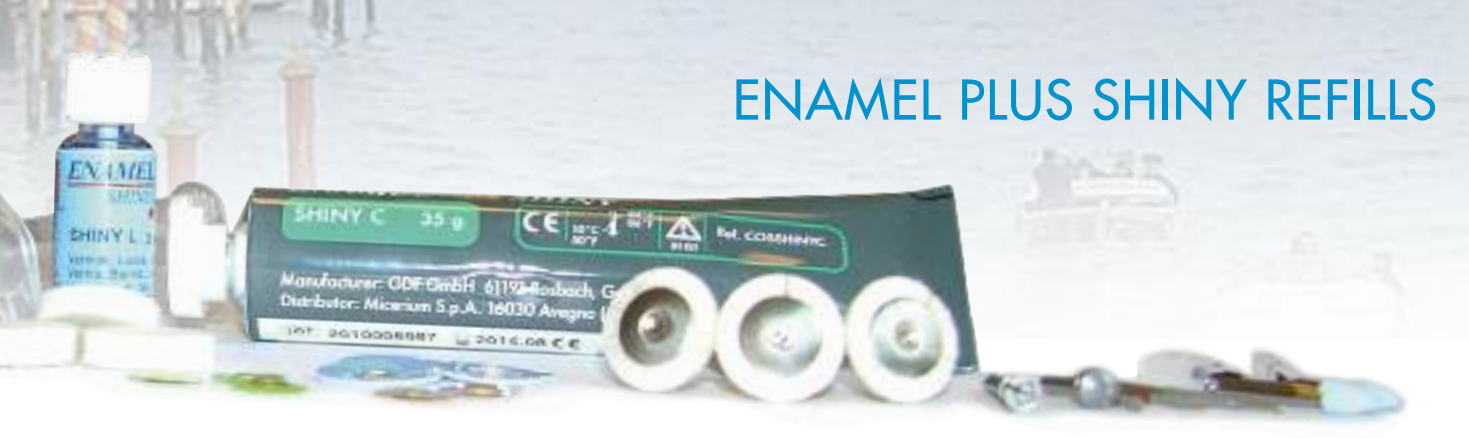
ENAMEL PLUS SHINY REFILLS



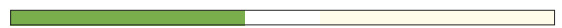
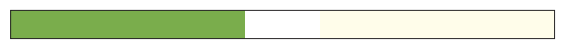
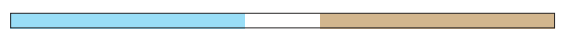
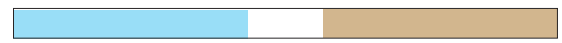
Ref	Description	Q.ty
COSSHINYG7	SHINY G glycerine Air Block in tips 0,5 ml	7 pcs
COSSHINYG	SHINY G glycerine Air Block in syringe	2 ml
COSSHINYG10	SHINY G glycerine Air Block in syringe	10 ml
COSSHINYL2	SHINY L marking varnish for micro-macro geography	3 ml
COSSHINYA	SHINY A 3 micron Diamond paste for pre-polishing to be used with Shiny S	2 g
COSSHINYB	SHINY B 1 micron Diamond paste for polishing to be used with Shiny S	2 g
COSSHINYC	SHINY C aluminium oxide paste for shiny to be used with Shiny F	35 g
COSSHINYS	SHINY S goat brush wheel RA	12 pcs
COSSHINYSHP	SHINY S goat brush wheel HP	12 pcs
COSSHINYF	SHINY F felt wheel 2 mm to be used with COSSHINY6	30 pcs
COSSHINYFD	SHINY FD interproximal felt disc 0,5 mm	100 pcs
COSSHINYFHP	SHINY FHP felt wheel	12 pcs
COSSHINY13	SHINY rubber points for pre-polishing	12 pcs
COSSHINY33	SHINY brown rubber points	12 pcs
CS014	SHINY14 Diamond Rubber for pre-polishing composite	6 pcs
CS015	SHINY15 Diamond Rubber for polishing composite	3 pcs
CS041	SHINY41 Impregnated Brush for posteriors "Point"	6 pcs
CS042	SHINY42 Impregnated Brush for posteriors "Mini Cup"	6 pcs
CS043	SHINY43 Impregnated Brush for posteriors "Cup"	6 pcs



ENAMEL PLUS SHINY REFILLS

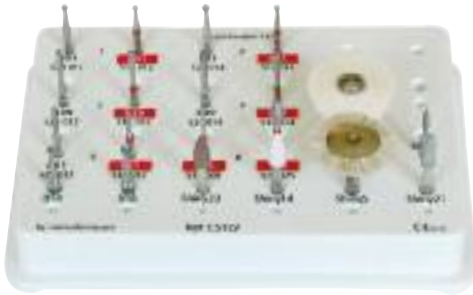


Ref	Description	Q.ty
COSSHINYCON	Paper cones HP	25 pcs
COSSHINYCONM	Mandrel for paper cones Shiny	1 pc
COSSHINY6	SHINY Mandrel for felt wheels	6 pcs
COSSHINYFM	SHINY Mandrel for discs	1 pc
COSSHINYDF	SHINY DISCS extra fine brown grain	100 pcs
COSSHINYDX	SHINY DISCS fine blue grain	100 pcs
COSSHINYDM	SHINY DISCS medium green grain	100 pcs
COSSHINYDC	SHINY DISCS coarse ivory grain	100 pcs
COSSHINYSF	SHINY STRIPS fine (blue) extrafine (brown) grain	100 pcs
COSSHINYSFS	SHINY STRIPS fine-extra fine narrow grain	100 pcs
COSSHINYSM	SHINY STRIPS medium (green) coarse (ivory) grain	100 pcs
COSSHINYSMS	SHINY STRIPS medium-coarse narrow grain	100 pcs
COSSHINY1	Handle for brushes	1 pc
COSSHINY50	Refill brushes	50 pcs
COSSHINY25	Tips ø 0,9 mm for Glycerine & Flow	25 pcs
CS050-2R	Diamond strips 12mm x 2mm fine red	5 pcs
CS050-2Y	Diamond strips 12mm x 2mm extra fine yellow	5 pcs
CS050-4R	Diamond strips 12mm x 4mm fine red	5 pcs
CS050-4Y	Diamond strips 12mm x 4mm extra fine yellow	5 pcs



ENA SHINY BUR KITS by DR. LORENZO VANINI

BUR KIT ANTERIOR DIRECT COMPOSITE



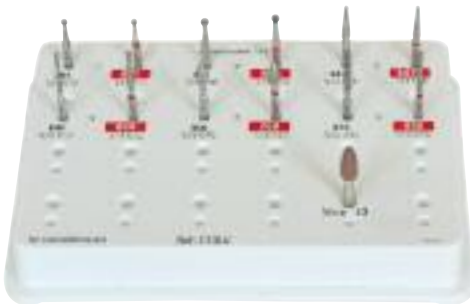
Ref	Description	Q.ty
CS1LV	Preparation Finishing & Polishing Kit anterior direct composite	
	Diamond Burs Shiny FG	12 pcs
	Round Carbide Bur Shiny RA	2 pcs
	30 blades Carbide Bur FG	1 pc
	Carborundum mounted point RA (CS21)	1 pc
	Brown & white diamond rubber points Shiny RA	2 pcs
	Goat hair brush RA	1 pc
	Felt wheel RA	1 pc
	Polishing pastes Shiny A, B, C, G	

BUR KIT POSTERIOR DIRECT & INDIRECT COMPOSITE



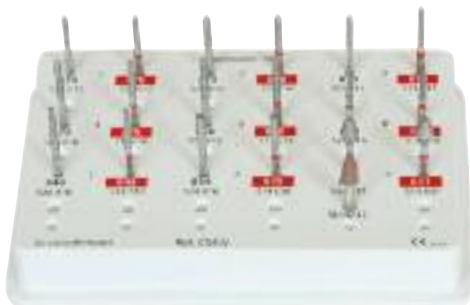
Ref	Description	Q.ty
CS2LV	Preparation Finishing & Polishing Kit posterior direct & indirect composite	
	Diamond Burs Shiny FG	16 pcs
	Round Carbide Bur Shiny RA	2 pcs
	Brown & gray diamond rubber points Shiny RA	2 pcs
	Goat hair brush RA	1 pc
	Felt wheel RA	1 pc
	Polishing pastes Shiny A, B, C, G	

BUR KIT COMPOSITE & CERAMIC METAL FREE



Ref	Description	Q.ty
CS3LV	Preparation & Finishing Kit veneer and metal free crown in composite and ceramic	
	Diamond Burs Shiny FG	12 pcs
	Brown rubber point Shiny RA	1 pc

BUR KIT 50°-90° METAL CROWN



Ref	Description	Q.ty
CS4LV	Preparation & Finishing Kit 50° & 90° metal crown	
	Diamond Burs Shiny FG	18 pcs
	Brown rubber point RA	1 pc

ENA SHINY REFILLS

CONTENTS KIT

Diamond Grain:	Diamond Grain:	Shape	Q.ty
Fine ●	Medium ○		
X-Fine ●	Coarse ●		
CS368514025	CS368524025		3 pcs
CS390504016			3 pcs
CS801514012	CS801524012		3 pcs
CS801514014	CS801524014		3 pcs
CS801514016	CS801524016		3 pcs
CS811504040	CS811534040		3 pcs
CS811514037	CS811524037		3 pcs
CS839514012	CS839524012		3 pcs
CS839514014	CS839524014		3 pcs
CS839514016	CS839524016		3 pcs
CS847514016	CS847524016		3 pcs
CS847R514016	CS847R524016		3 pcs
CS848514012	CS848524012		3 pcs
CS848514018	CS848524018		3 pcs
CS849514012	CS849524012		3 pcs
CS849514016	CS849524016		3 pcs
CS850514016	CS850524016		3 pcs
CS850514018	CS850524018		3 pcs
CS853514008			3 pcs
CS855514014	CS855524014		3 pcs
CS856504018	CS856534016		3 pcs
CS859504014	CS859534012		3 pcs
CS861514012	CS861524012		3 pcs
CS878514012	CS878524012		3 pcs
CS878514016	CS878524016		3 pcs
CS879514012	CS879524012		3 pcs
CS879514016	CS879524016		3 pcs
Carbide Bur	CS1S014		3 pcs
Carbide Bur	CS1S018		3 pcs
Carbide Bur	CS9904		3 pcs
Rubber point, brushes, felt and carborundum stone			

CS1LV	CS2LV	CS3LV	CS4LV
●	● ○	● ○	
	●		
● ○		● ○	
● ○			
		● ○	
	● ●		
			● ○
● ○			
● ○			
			● ○
			● ○
		● ○	
		● ○	
	● ○		
	● ○		
		● ○	
			● ○
● ○	●		
	● ○		
	● ●		
	● ●		
● ○			
			● ○
			● ○
			● ○
●			
●	●		
●	●		
○ ○ ○	○ ○	○	○

● 15 μ ● 40 μ ○ 80-100 μ ● 130 μ ● Carbide bur ○ Carborundum ● Shiny14 ○ Shiny15 ● Shiny33 ○ ShinyS ○ ShinyF

Ena Post

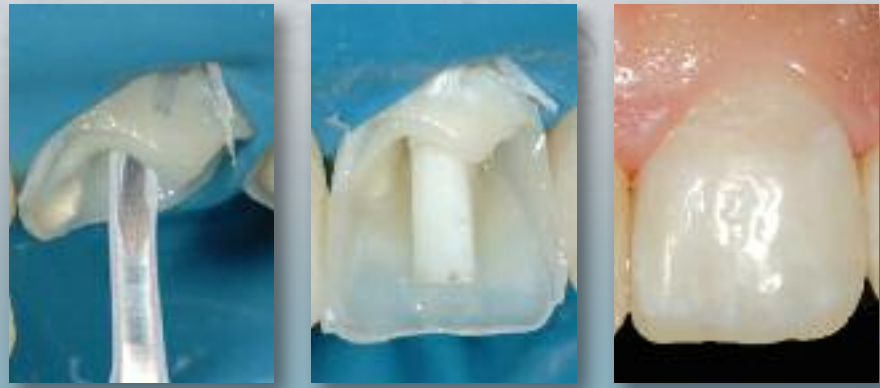
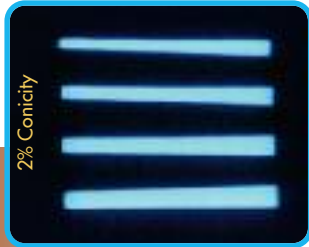
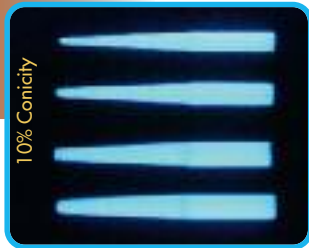
MICROSCOPY

Prof. Vassilios Katsias



SECTION

UV LIGHT



Perfect functional and aesthetic integration with glass fiber post and composite

Restoration made by Dr. Lorenzo Vanini

OPERATIVE & TECHNOLOGICAL ADVANTAGES

- Aesthetic: fluorescent and dentine colour
- Functional: same elasticity of dentine
- Perfectly integrated with the tooth, cement and restorative material
- The only post with silanized fibers inserted in the same resin of restorative material (Enamel plus HRi)
- Perfect silanization
- Visible on X-ray only
- Coloured rings for easy identification



Ref	Description	Q.ty
CP0200	AESTHETIC POST KIT ENAPOST 2% CONICITY:	
	Ena Post Fiber Post ø 0,8 - 1,25 mm	5 pcs
	Ena Post Fiber Post ø 1,0 - 1,45 mm	5 pcs
	Ena Post Fiber Post ø 1,2 - 1,65 mm	5 pcs
	Ena Post Fiber Post ø 1,4 - 1,88 mm	5 pcs
	Ena Post drill 1 x each size	4 pcs
CP0208	Ena Post Fiber Post white ring ø 0,8 - 1,25 mm	10 pcs
CP0210	Ena Post Fiber Post yellow ring ø 1,0 - 1,45 mm	10 pcs
CP0212	Ena Post Fiber Post blue ring ø 1,2 - 1,65 mm	10 pcs
CP0214	Ena Post Fiber Post black ring ø 1,4 - 1,88 mm	10 pcs
CP0208-30	Ena Post Fiber Post white ring ø 0,8 - 1,25 mm	30 pcs
CP0210-30	Ena Post Fiber Post yellow ring ø 1,0 - 1,45 mm	30 pcs
CP0212-30	Ena Post Fiber Post blue ring ø 1,2 - 1,65 mm	30 pcs
CP0214-30	Ena Post Fiber Post black ring ø 1,4 - 1,88 mm	30 pcs
CPF0208	Ena Post white ring drill ø 0,8 - 1,25 mm	1 pc
CPF0210	Ena Post yellow ring drill ø 1,0 - 1,45 mm	1 pc
CPF0212	Ena Post blue ring drill ø 1,2 - 1,65 mm	1 pc
CPF0214	Ena Post black ring drill ø 1,4 - 1,88 mm	1 pc

Ref	Description	Q.ty
CP1000	AESTHETIC POST KIT ENAPOST 10% CONICITY:	
	Ena Post Fiber Post ø 0,5 - 1,6 mm	5 pcs
	Ena Post Fiber Post ø 0,7 - 1,8 mm	5 pcs
	Ena Post Fiber Post ø 0,9 - 2,0 mm	5 pcs
	Ena Post Fiber Post ø 1,1 - 2,2 mm	5 pcs
	Ena Post drill 1 x each size	4 pcs
CP1005	Ena Post Fiber Post white ring ø 0,5 - 1,6 mm	10 pcs
CP1007	Ena Post Fiber Post green ring ø 0,7 - 1,8 mm	10 pcs
CP1009	Ena Post Fiber Post red ring ø 0,9 - 2,0 mm	10 pcs
CP1011	Ena Post Fiber Post blue ring ø 1,1 - 2,2 mm	10 pcs
CP1005-30	Ena Post Fiber Post white ring ø 0,5 - 1,6 mm	30 pcs
CP1007-30	Ena Post Fiber Post green ring ø 0,7 - 1,8 mm	30 pcs
CP1009-30	Ena Post Fiber Post red ring ø 0,9 - 2,0 mm	30 pcs
CP1011-30	Ena Post Fiber Post blue ring ø 1,1 - 2,2 mm	30 pcs
CPF1005	Ena Post drill (1 mark) ø 0,5 - 1,6 mm	1 pc
CPF1007	Ena Post drill (2 marks) ø 0,7 - 1,8 mm	1 pc
CPF1009	Ena Post drill (3 marks) ø 0,9 - 2,0 mm	1 pc
CPF1011	Ena Post drill (4 marks) ø 1,1 - 2,2 mm	1 pc



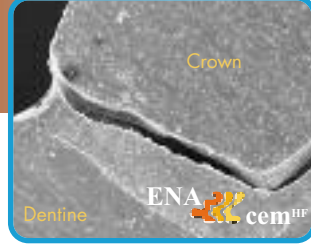
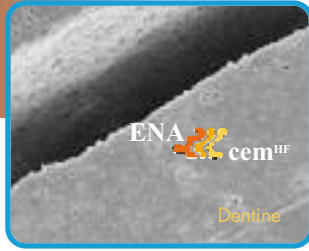
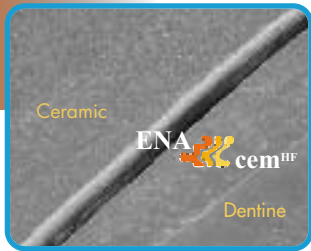
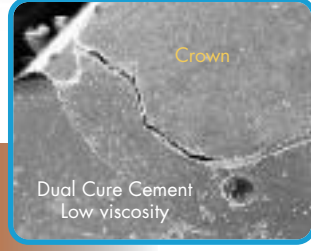
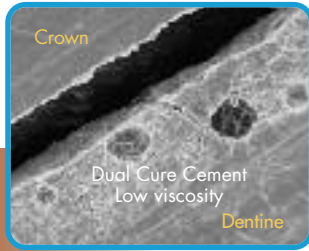
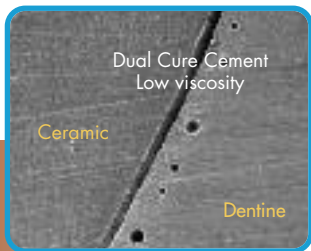
Ena Cem^{HF}



Perfect biocompatibility ...compared with cementation with traditional technique and Ena Cem^{HF}...

ANALYSIS UNDER MAGNIFICATION

Images under magnification show homogeneity of Ena Cem^{HF} unlike other Low Viscosity Dual Cure Cement that contains air bubbles

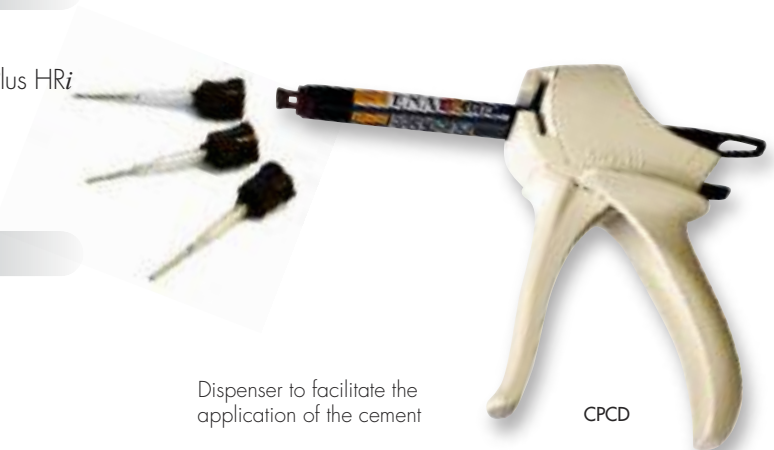


OPERATING ADVANTAGES

- Highly filled (77% in weight)
- Same physical characteristics as Enamel Plus HRi
- No air bubbles
- Minimum thickness <50µm
- Fluorescent and radiopaque (210%Al)

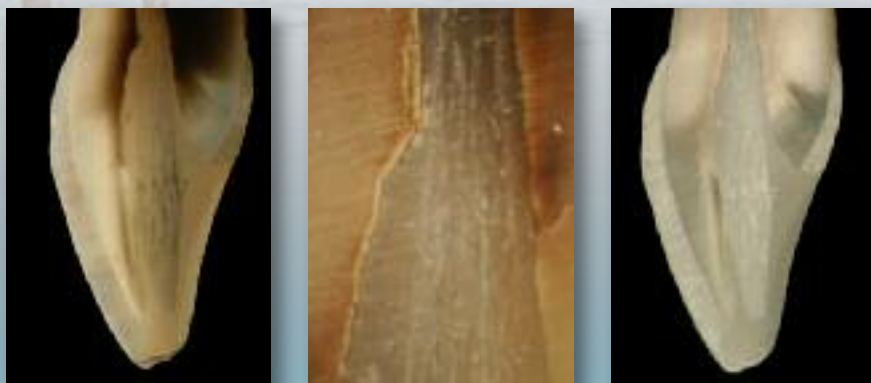
TECHNOLOGICAL ADVANTAGES

- Crown & bridge luting
- Post luting & core build-up
- Composite and ceramic veneers, inlay and onlay luting



Dispenser to facilitate the application of the cement

CPCD



Perfect canal sealing (Ena Post 10%) with Ena Cem^{HF}

PHYSICAL CHARACTERISTICS

PRODUCT	THICKNESS μm (FORCE 35N)	VICKERS HARDNESS MPa	YOUNG MODULUS MPa	FLEXURAL STRENGTH MPa	COMPRESSIVE STRENGTH MPa	RADIOPACITY
Ena Cem ^{HF}	45	670	12850	116	342	210% Al
Cement-Flow dual/light curing	28/55	270	5471	88	216	30% Al
High viscosity composite	> 500	600/700	8000/11000	140	400	

Ref	Description	Q.ty
CPCK	ENA CEM HF HIGHLY FILLED Dual cement Intro Kit: Ena Cem HF shades UD1-UD2-UD3-UD4 Ena-bond Bonding Ena-bond Bonding catalyst Ena-Etch Etching Gel 37% Automix Tips + Intraoral tips Orange applicators with plug	4x3 g 2 ml 2 ml 2 ml
CPCUD1	Ena Cem HF UD1 automix syringe	8 g
CPCUD2	Ena Cem HF UD2 automix syringe	8 g
CPCUD3	Ena Cem HF UD3 automix syringe	8 g
CPCUD4	Ena Cem HF UD4 automix syringe	8 g
CPCUD5	Ena Cem HF UD5 automix syringe	8 g
CPCTIPN	Automix tips Ena Cem	50 pcs
CPCTIPL	Intraoral white tips Ena Cem	25 pcs
CPCTIPS	Automix tips Ena Cem with intracanal tips	50 pcs
COSM3A	Orange applicators with plug	50 pcs
CPCD	Dispenser with anatomic handle for Ena Cem HF cement	1 pc

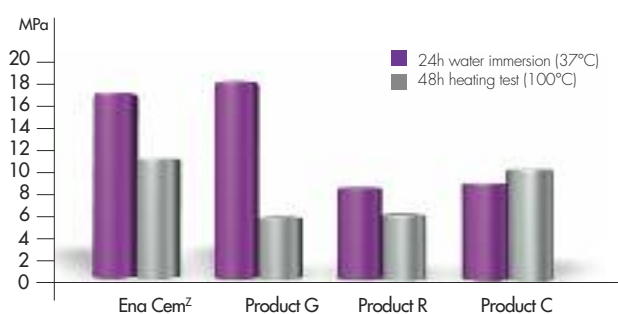
Ref	Description	Q.ty
CPCTK	ENA CEM TRY-IN KIT Ena Cem TRY-IN shade UD1 Ena Cem TRY-IN shade UD2 Ena Cem TRY-IN shade UD3 Ena Cem TRY-IN shade UD4 Applicator tips CHFF25	2 g 2 g 2 g 2 g 25 pcs
CPCTUD1	Ena Cem TRY-IN shade UD1	2 g
CPCTUD2	Ena Cem TRY-IN shade UD2	2 g
CPCTUD3	Ena Cem TRY-IN shade UD3	2 g
CPCTUD4	Ena Cem TRY-IN shade UD4	2 g
CPCTUD5	Ena Cem TRY-IN shade UD5	2 g

Ref	Description	Q.ty
CPC	ENA CEM LOW VISCOSITY Dual low viscosity cement	8 g

ENA CEM^Z

Luting system for zirconia

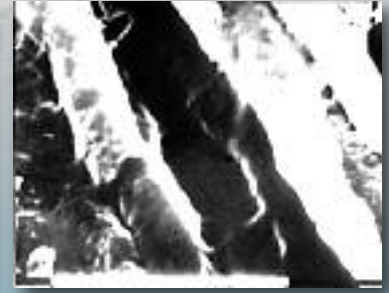
Self-curing cement with special primer for luting of zirconia prosthodontic appliances on zirconia or titanium abutment



Ref	Description	Q.ty
CPCZK	ENA CEM ^Z for ZIRCONIA Introductory Kit Self curing cement Primer	8 g 5 ml
CPCZ	Ena Cem Z self curing cement	8 g
CPCZP	Ena Cem Z Primer	5 ml

ENA BOND ADHESIVE ETCH & RINSE

EnaBond one-bottle



Microscope scanning of one bottle bonding 2300x and 3000x

The detail evidences the high penetration of dentine enamel bonding into the dentine tubuli (Prof. Vasilios Kaitsas).

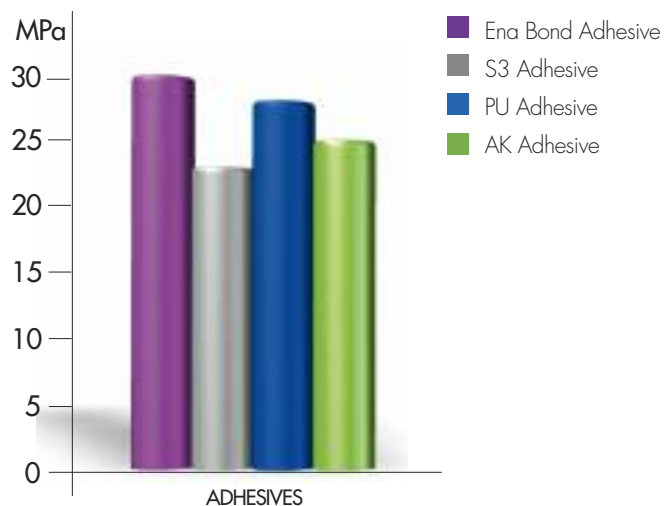
V generation adhesive One-Bottle

Ena Bond is used with Etch & Rinse technique and applied at least in two layers after etching with Ena Etch.

CHARACTERISTICS

- Aesthetics & Retention
- Fluorescent as natural tooth
- Bond strength values over the average industry: 30 MPa*
- Ethanol based special composition
- Dual catalyst used with dual composite

STRESS AT MAXIMUM BREAKING LOAD*



* Test made by University of Chieti - Prof. Camillo D'Arcangelo - Dr. Tonino Traini, in comparison with three other adhesive systems (see diagram)



Catalyst for dual curing luting

Ref	Description	Q.ty
COSM300	ENA BOND ONE-BOTTLE ADHESIVE Ena Bond light curing Bonding Phosphoric acid 37% Accessories	5 ml 2 ml

Ref	Description	Q.ty
COSM300A	Ena Bond light curing bonding	5 ml
COSM300D	Ena Bond Catalyst makes bonding dual	5 ml
COSM3B	Mixing base	20 pcs

IV generation two-bottle adhesive

Using Ena Bond as a Primer, after etching with Ena Etch, and Ena Seal as a second layer of unfilled adhesive resin, you can get excellent adhesion results and a perfect seal, converting Ena Bond into a Two-Bottle adhesive system.



EnaBond

two-bottle

CHARACTERISTICS

- Excellent adhesion values*
- 24 MPa on dentine

* Test made by University of Chieti - Prof. Camillo D'Arcangelo, in comparison with two other self-etching adhesive systems with Primer

Ref	Description	Q.ty
COSM300K	ENA BOND TWO-BOTTLE ADHESIVE Ena Bond light curing Bonding Ena Seal light curing resin Phosphoric acid 37% Accessories	5 ml 5 ml 2 ml

ENA ETCH



Ref	Description	Q.ty
COSM101B	ENA ETCH Phosphoric acid 37% without silicon bulk syringe usable with 2ml rechargeable syringes	1x25ml 2x2 ml

Ref	Description	Q.ty
COSM101	Phosphoric acid 37% without silicon	2x2ml
COSM3S	Ena Bond applicators: small ivory	50 pcs
COSM3M	Ena Bond applicators: medium blue	50 pcs



COSM101B

ENA SEAL

Low viscosity light curing sealant

- Adhesive resin in combination with Ena Bond
- Conditioner for composite surfaces and for composite application brushes (do not use with new HRi Universal Enamel)
- Composite surface sealant
- Composite restoration margin sealant
- Acrylic temporary sealant



Ref	Description	Q.ty
COSZ100	ENA SEAL SEALANT Ena Seal light curing sealant Phosphoric acid 37% Accessories	5 ml 2 ml
COSZ10	Ena Seal light curing sealant	5 ml

ENA FLOW SEALANT

Pit & Fissure Sealant

Light curing fluid sealant

- Natural tooth surface sealant
- Composite restoration margin sealant



Ref	Description	Q.ty
EHFS	ENA FLOW SEALANT Pit & Fissure Sealant Disposable tips 0,8 mm	2 ml 3 pcs

LIGHT CURING UNIT

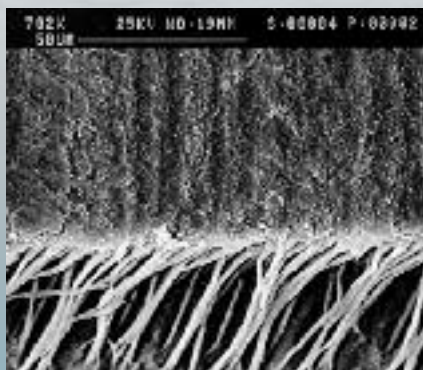
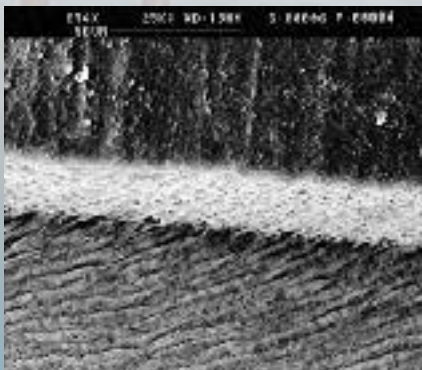
LED curing light

- Light curing with full power
- Handy and rechargeable

Ref	Description	Q.ty
CLEDPLUS	Micerium LED light curing unit 1400 mW - 240 V 3 programs F: Fast = full power R: Ramp = Gradually increases strength P: Pulse = Short pulses	1 pc



ENA BOND SE SELF-ETCHING ADHESIVE



Etched enamel and dentine treated with Ena Bond SE on electron microscope (SEM)

The microscopy shows the enamel surface and the “resin-tags” that put in evidence the penetration of Ena Bond SE in dentine tubules.

University of Tor Vergata Rome (Prof. Francesco Mangani).

Ena Bond SE

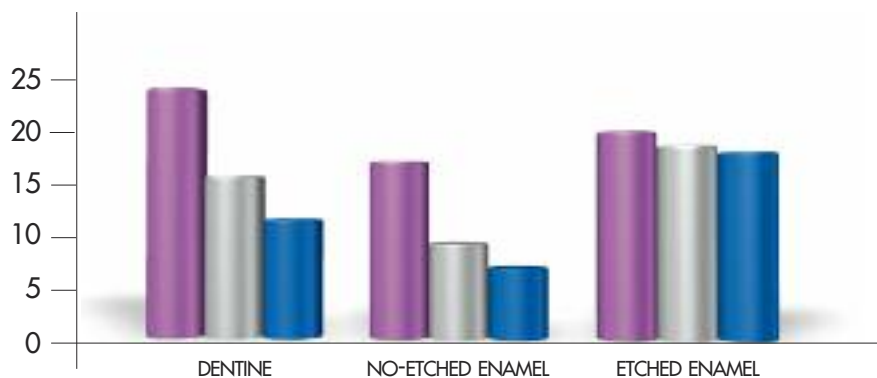
aesthetics

CHARACTERISTICS

- Bond strength values over the average industry:
 - 24 MPa on dentine
 - 17 MPa on no-etched enamel
 - 20 MPa on etched enamel
- Special composition in water solution



MICRO TENSILE BOND STRENGTH (MPa)*



- Ena Bond SE Adhesive
- Self Etching "K" Adhesive
- Self Etching "M" Adhesive

* Test made by University of Chieti - Prof. Camillo D'Arcangelo, in comparison with two other self-etching adhesive systems with Primer (see diagram)

Ref	Description	Q.ty
CFOTK	ENA BOND SE SELF-ETCHING ADHESIVE	
	Ena Bond SE Primer	5 ml
	Ena Bond SE Light curing resin	5 ml
	Ena Etch Phosphoric acid 37% Accessories	2 ml

Ref	Description	Q.ty
CFOT	ENA BOND SE SELF-ETCHING ADHESIVE	
	Ena Bond SE Primer	5 ml
	Ena Bond SE Light curing resin	5 ml
CFOTP	Ena Bond SE Primer	5ml
CFOTS	Ena Bond SE Light curing resin	5ml

ADHESIVE SYSTEM

ENA BOND SE

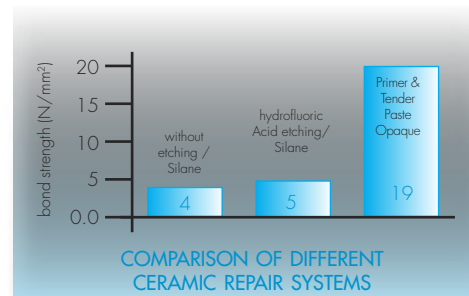
TENDER REPAIR

Ceramic repair without acid

- Higher Biocompatibility
- No risks for tissue
- Higher adhesion



Ref	Description	Q.ty
COSRIP1	TENDER REPAIR KIT ceramic & metal	
	Tender Bond metal ceramic primer	2,5 ml
	Tender paste Opaque Light for metal	3 g
	Tender paste Opaque Clear for ceramic	3 g
	Enamel Plus M brush	1 pc
COSRIP2	TENDER REPAIR KIT ceramic	
	Tender Bond metal ceramic primer	2,5 ml
	Tender paste Opaque Clear for ceramic	3 g
	Enamel Plus M brush	1 pc
ETBOND	Tender metal primer ceramic	5 ml
ETOL	Tender paste Opaque Light for metal	3 g
ETOCLEAR	Tender paste Opaque Clear for ceramic	3 g



ENA ETCH REPAIR

Ceramic repair

with hydrofluoric acid and silane



Ref	Description	Q.ty
COSM661	MICERIUM CERAMIC REPAIR KIT	
	Protective varnish	3 ml
	Hydrofluoric acid 9,6% for ceramic	3 ml
	Silane	3 ml
COSZ15	Hydrofluoric acid 9,6% for ceramic	3 ml
COSZ25	Silane Porcelain Primer	3 ml
COSSHINYL2	Protective varnish	3 ml
COSM3T	Tips for acid syringe	25 pcs

Preimpregnated Glass Fibre

Impregnated in light cured fluorescent resin, the same used for Enamel plus HRi and Ena Post

TECHNOLOGICAL ADVANTAGES

Fibres are impregnated and also silanized; filler 0,012 µm:

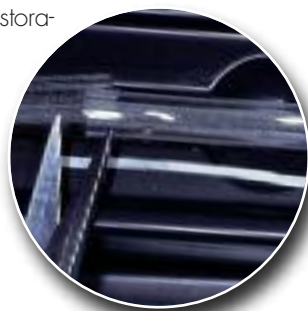
- Unidirectional single roads of glass fibre 14 µm
- Very strong resistance to acid and alkaline media
- Higher resistance of finished product
- Stronger chemical connection between fibres
- Increased physical properties

OPERATING ADVANTAGES

- Oral application without metal
- Ultraconservative, easy to repair
- Usable with most acrylics and composites
- No additional investment required
- Ready to use, fast application, reduced costs of treatment, no risk of fraying, during application in the time
- Better chemical reaction with luting and restorative materials and excellent aesthetics

Special packaging:

- Fibre holder in silicone to be used for an easy application: measure, cut, apply, cure and check



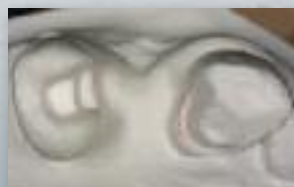
Polyethylene Fibres

Made with high molecular weight polyethylene and surface treated to achieve bonding capability that increases resin adhesion.

Improve physical properties of acrylic removable, orthodontic temporary and prosthodontic appliances. Suitable also for repair.

Ref	Description	Q.ty
ATF11	TENDER FIBER ORTHO Glass fibre for orthodontic applications Length 12 cm - ø 1,8 mm (1.600 fibres)	1 pc
TF21	TENDER FIBER DUE Glass fibre for periodontal splinting Length 12 cm - ø 1,3 mm (3.200 fibres)	1 pc
TF41	TENDER FIBER QUATTRO Glass fibre for acrylic & composite prosthetic reinforcement. Length 12 cm - ø 1,7 mm (6.400 fibres)	1 pc

QUATTRO



Tender Fiber QUATTRO prosthetic reinforcement for adhesive (Maryland) bridges or inlay (Clinical images courtesy Mr. Daniele Rondoni)



Tender Fiber QUATTRO prosthetic reinforcement for composite and implant resin (Clinical images courtesy Dr. Tiziano Testori)

DUE



Periodontal splinting with Tender Fiber DUE (Clinical images courtesy Dr. Luca Pinoli)

ZERO



Polyethylene Fibre Tender Fiber ZERO for removable prosthesis reinforcement (Clinical images courtesy Mr. Daniele Rondoni)



Ref	Description	Q.ty
TF01	TENDER FIBER ZERO Polyethylene fibre economic, not impregnated for reinforcement of orthodontic, temporary & removable acrylic prosthesis	17 mt

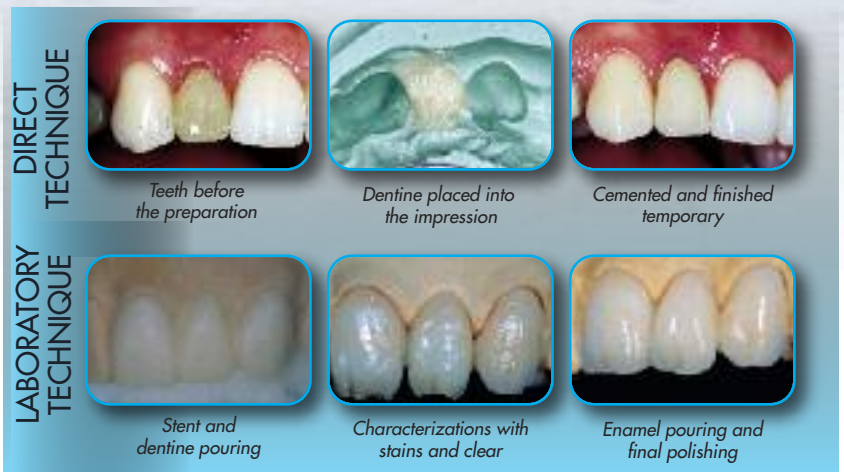
ENAMEL PLUS TEMP

Temp

for packages see section Laboratory page 44-45



Fluorescent colours



Temporary resin for aesthetic temporary crown and bridge

Very interesting material for opacity and fluorescence of dentine bodies and for translucency of enamel bodies that allow to put in evidence the typical contrast between these two elements in the natural tooth. Enamel bodies also allow to obtain a natural polishing in temporary crowns, similar to the definitive ceramic elements. It can be used both in laboratory with the help of silicone stent or of vacuum forming matrix with the direct technique using a silicone impression or a preformed crown.

TEMP COLOUR SYSTEM

Powder & liquid light curing **stains** for fast characterization of temporary both in dental practice and in laboratory.

TECHNOLOGICAL & OPERATING ADVANTAGES

- Intensive dentine shades A light (UD2-UD3) and AS dark (UD3,5-UD4), B (UD5) for cervical and dentine characterization of temporary
- Intensive shades sunrise and sunset for characterization of temporary, sky for enamel, cloud for mamelons
- Light-curing liquid for mixing the shades
- Light-curing varnish for polishing and sealing, with primer and cleaning liquids



Ideal for characterization of temporary made with CAD/CAM



Ref	Description	Q.ty
TEMPS1N	STAINS TEMP COLOUR SYSTEM KIT shades A, AS, B, sunrise, sky, cloud, sunset, light-curing liquid, varnish	3g ea 10 ml ea
TEMPS21	Varnish for polishing UVA	10 ml
TEMPS22	Primer for varnish	10 ml
TEMPS11	Intense dentine shade A - light (UD2-UD3)	3 g
TEMPS12	Intense dentine shade AS - dark (UD3,5-UD4)	3 g
TEMPS13	Intense dentine shade B (UD5)	3 g
TEMPS15	Intensive shade sky	3 g
TEMPS16	Intensive shade sunrise	3 g
TEMPS17	Intensive shade cloud	3 g
TEMPS18	Intensive shade sunset	3 g
TEMPLC	Enamel plus Temp light curing liquid	10 ml

Temp Colour System characterization system developed by Mr. Oliviero Turillazzi



ENA SOFT is an elastic material for temporary restorations. It has advantages of easy removal in one piece without damage to preparation.

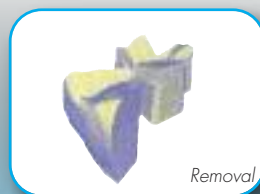
ENA SOFT is suitable also for long term temporaries because it perfectly maintains the shape of tooth.

TECHNOLOGICAL & OPERATIVE ADVANTAGES

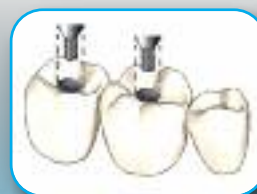
- Simple to apply: not sticky
- Easy to remove in one piece
- Suitable for inlay & onlay
- Strong and long lasting fillings
- Easy to remove from implant screws

Ref	Description	Q.ty
EHTS2	Ena Soft Dentine Colour	5 g

ENA SOFT



Temporary fillings for inlay & onlay



Fillings for implant screw

MOCK UP KIT

For temporary veneers



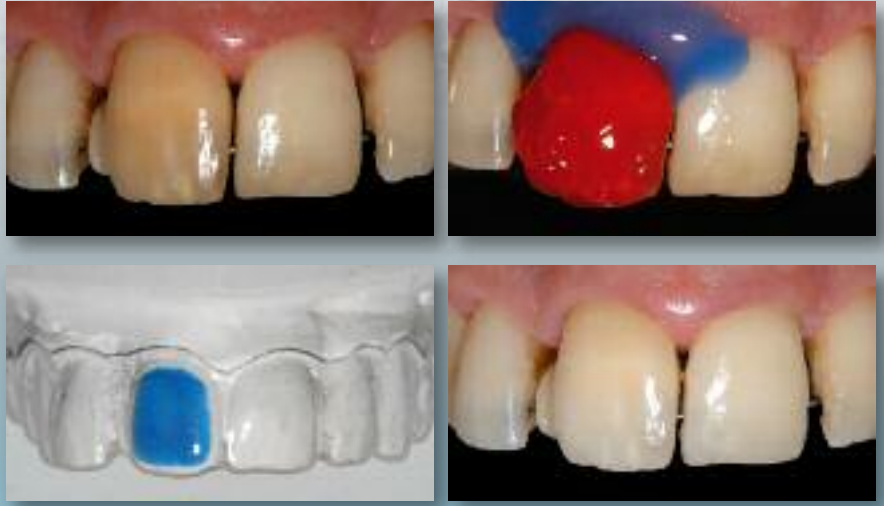
TEMPORARY IN 5 MINUTES:

- impression with silicone and clear tray 45 sec.
- impression setting 1 min. 30 sec.
- veneer preparation
- Flow HRi application in stent 30 sec.
- light curing 60 sec.
- final light curing with Ena Seal 60 sec.

Ref	Description	Q.ty
TEMPSMU	MOCK UP KIT	
	Temp Silic Transparent Silicone for dentist	2x50 ml
	Auto Mixing Tips	8 pcs
	Anterior Transparent Tray	2 pcs
	Full Arch Upper Transparent Tray	2 pcs
	Full Arch Lower Transparent Tray	2 pcs
	Enamel plus HRi Flow	3x2 g
	Black tips ø 1,2 mm	3
	Ena Seal	2,5 ml

Ref	Description	Q.ty
TS1	Transparent Silicone for dentist	50 ml
TS1-5	Transparent Silicone for dentist	5x50 ml
TSPA	Anterior Transparent Tray	25 pcs
TSPL	Full Arch Lower Transparent Tray	25 pcs
TSPS	Full Arch Upper Transparent Tray	25 pcs

Ena White



Ena White

System for treatment of pathogen & iatrogenic discolouration

Vital tooth treated with Ena White Power 35% hydrogen peroxide

ENA WHITE POWER

- 35% Hydrogen peroxide for professional treatment in office
- Results in one visit
- Bicomponent syringe activates only the needed quantity for the application
- Neutral Ph 7.3, no enamel damage
- Use with rubber dam or light curing gingival protection Ena Dam



ENA WHITE REGULAR

- 12% Hydrogen peroxide professional treatment in office
- Treatment of non-vital tooth with walking technique
- Safe and effective treatment for sensitive teeth



ENA WHITE LIGHT

- 6% Hydrogen peroxide for cosmetic bleaching
- Home treatment, simple and safe maintenance
- Package with personalized label
- Pleasant freshness: mint flavour!



ENA WHITE



Ref	Description	Q.ty
COSM035K	ENA WHITE COMPLETE KIT Ena White Power 35% Ena White Regular 12% Ena White Home Light 6% Ena Dam gingival protection Ena White Block-out Ena White Desensitizer Bleaching tray sheets Pocket tray cases Cheek expander with tongue retractor	5 g 2ml 3ml 1,5 g 3 ml 1,2 ml 2 pcs 2 pcs 1 pc
COSM035E	ENA WHITE POWER KIT 35% Hydrogen peroxide gel Ena Dam paste	5g 1,5g
COSM035	ENA WHITE POWER REFILLS 35% Hydrogen peroxide gel	2 x 5 g
COSM035T	Ena White automixing tips	50 pcs
COSM012	ENA WHITE REGULAR ENDO REFILLS 12% Hydrogen peroxide gel	2 x 2 ml
COSM015	ENA WHITE LIGHT HOME for Cosmetic Home Bleaching 6% Hydrogen peroxide gel	4 x 3 ml
COSM015B	ENA WHITE LIGHT HOME for Cosmetic Home Bleaching 6% Hydrogen peroxide gel Tray box	2 x 3 ml 1 pc
COSM03B	ENA DAM gingival protection	4 g
COSM05S	ENA WHITE Desensitizer	2x1,2 ml
COSM05B	ENA WHITE block-out	3 ml
COSMT10	Tray sheets	10 pcs



Ena White 2.0

NEVERMORE
BLEACHING TRAYS
OVERNIGHT!



ENA® WHITE 2.0

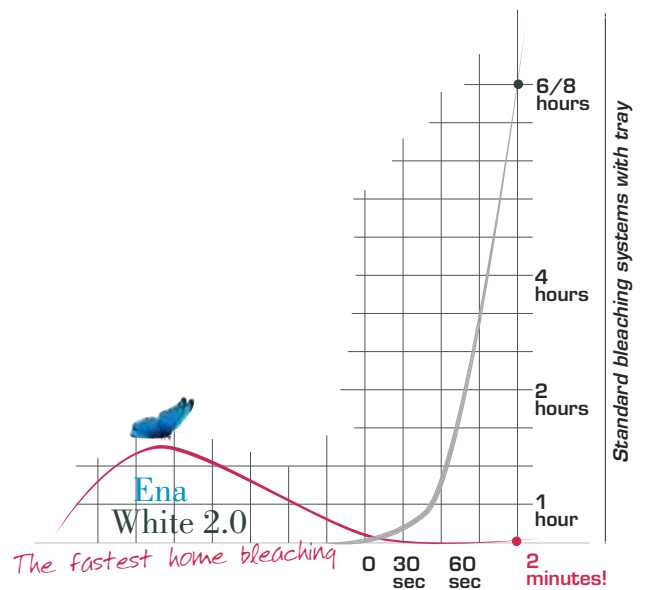
The fastest professional home bleaching

Cosmetic home bleaching made by a special toothbrush with dispenser which contains the bleaching gel (sufficient for a treatment of about 20 days) based on 6% hydrogen peroxide with the special accelerator XS151™ which activates while brushing; the absorption rate of hydrogen peroxide is increased exponentially if compared to a traditional bleaching with tray



TECHNOLOGICAL & OPERATING ADVANTAGES

- Without the need of wearing bleaching trays at night, it is easy to use, cost saving and gives an extraordinary comfort to the patient
- The unique properties allow to reduce the daily application time to only two minutes instead of 6/8 hours as required for the traditional bleaching systems
- The bleaching gel activates thanks to XS151™ accelerator while brushing



The recommended number of applications for treatment is approx. 80; it is necessary to check the result after the first 40 applications to evaluate if the patient has reached the desired level of satisfaction or if he should go on with the second treatment refill (or the second toothbrush depending on the package).

ENA WHITE



ECW01



ECW01B



ECW02



ECW12E



ECW01BS

Ref	Description	Q.ty
ECW01*	ENA WHITE 2.0 Professional home bleaching system toothbrush filled with 6ml H ₂ O ₂ gel	1 pc
ECW01B*	ENA WHITE 2.0 Professional home bleaching system toothbrush filled with 6ml H ₂ O ₂ gel Enamel Plus toothpaste	1 pc 1 pc
ECW02	ENA WHITE 2.0 Professional home bleaching system toothbrush filled with 6ml H ₂ O ₂ gel	2 pcs
ECW24**	ENA WHITE 2.0 Professional home bleaching system toothbrush filled with 6ml H ₂ O ₂ gel	24 pcs
ECW24B**	ENA WHITE 2.0 Professional home bleaching system toothbrush filled with 6ml H ₂ O ₂ gel Enamel Plus toothpaste	24 pcs 24 pcs
ECW12E	ENA WHITE 2.0 Professional home bleaching system toothbrush filled with 6ml H ₂ O ₂ gel (economy package without tubes)	12 pcs

*minimum order: multiple of 24 pcs packed in dispenser of 12 tubes
**toothbrushes delivered in separate box for easier fridge stock (see below picture)



ECW24

Ref	Description	Q.ty
ECW01BS	ENA WHITE 2.0 Professional home bleaching system for a treatment of about 40 days Toothbrush with dispenser (empty) refill H ₂ O ₂ gel Enamel Plus toothpaste 75 ml	1 pc 11 ml 1 pc
ECW12ES	ENA WHITE 2.0 Professional home bleaching system for a treatment of about 40 days Toothbrush with dispenser (empty) refill H ₂ O ₂ gel (economy package without tubes)	12 pcs 12 pcs x 11 ml

Other packages available on request

ENA ORAL CARE

SMART PROPHY PASTE, BRUSHES AND RUBBERS FOR PROPHYLAXIS

Prophy paste available in 3 grains, packed in syringe with disposable tips for an accurate application.



Ref	Description	Q.ty
ECP30B	SMART PROPHY paste 6 syringe with 25 tips blue for tartar (250 RDA)	6x3ml
ECP30V	SMART PROPHY paste 6 syringe with 25 tips green for thick plaque (170 RDA)	6x3ml
ECP30R	SMART PROPHY paste 6 syringe with 25 tips pink for thin plaque (120 RDA)	6x3ml
ECP30K	SP SMART PROPHY KIT Prophy paste in syringes with oral tips	
	Prophy paste blue 250 RDA	3 ml
	Prophy paste green 170 RDA	3 ml
	Prophy paste pink 120 RDA	3 ml
	Oral tips ø 1,5 mm	25 pcs
	Assorted prophy brush	4 pcs
	Assorted prophy rubber	2 pcs



Cup brushes with flexible nylon bristles and rubbers for prophylaxis, to be used alone or with prophy paste

Ref	Description	Q.ty
ECP01 ECP01B	SMART PROPHY Prophy brushes RA Soft Pink Brushes RA Brushes RA	12 pcs 100 pcs
ECP02 ECP02B	SMART PROPHY Prophy brushes RA Natural White Brushes RA Brushes RA	12 pcs 100 pcs
ECP03 ECP03B	SMART PROPHY Prophy brushes RA Hard Blue Brushes RA Brushes RA	12 pcs 100 pcs
ECP04 ECP04B	SMART PROPHY Small Prophy brushes RA Natural White Brushes RA Brushes RA	12 pcs 100 pcs

Ref	Description	Q.ty
ECP31 ECP31B	SMART PROPHY Polishers RA Medium Purple Rubbers RA Rubbers RA	12 pcs 100 pcs
ECP21 ECP21B	SMART PROPHY Polishers Black with screw Rubbers Rubbers	12 pcs 100 pcs
ECP20	SMART PROPHY Mandrel with screw	12 pcs

EASY CURETTE

Universal Curette long lasting sharpening

Graduated lines and two arrows per tip showing double cutting side

Ref	Description	Q.ty
ECC01	Steel Universal Curette	1 pc
ECC01T	Titanium Universal Curette ideal around implant	1 pc



Kiss Me Kit

The Dental kit that blows up your smile...anywhere
In your office, during your free time, keep in your pocket KISS ME Kit: you will feel always fresh and self-confident!



Ref	Description	Q.ty
ECKMK	KISS ME KIT:	
	Kiss Me Spray	1 pc
	Digital Brush	5 pcs
	3E Interdental Brush Small	1 pc
	Dental Floss PTFE Tape ECIF1	1 pc
ECKMT	KIT KISS ME KIT:	
	Toothpaste	1 pc
	Digital Brush	5 pcs
	3E Interdental Brush Small	1 pc
	Dental Floss PTFE Tape ECIF1	1 pc

DIGITAL BRUSH DISPOSABLE TOWEL

Extraordinary ease for oral hygiene even outdoors

- Ideal for post-surgical cleaning, or when brushing is not possible
- It helps to prevent dental plaque

Ref	Description	Q.ty
ECDB1	DB Digital Brush with chlorhexidine 0,12%	10 pcs
ECDB1B	DB Digital Brush with chlorhexidine 0,12%	50 pcs
ECDB1D	DB Digital Brush with chlorhexidine 0,12% in dispenser	100 pcs
ECDB2	DB Digital Brush Baby with saline	10 pcs
ECDB2B	DB Digital Brush Baby with saline	50 pcs
ECDB2D	DB Digital Brush Baby with saline in dispenser	100 pcs

3E INTERDENTAL BRUSH

- Patented, anatomical, scalloped design, for an optimal removal of plaque and food debris in interdental areas
- Nylon bristles with retentive memory
- Ergonomic plastic handle
- Hygienic cap
- Stainless steel Teflon coated wire, anti-scratch, ideal also around titanium implants

Ref	Description	Q.ty
ECE30S*	Green Small brush ø from 1,2 to 4 mm L.10 mm	30 pcs
ECE30M*	Red Medium brush ø from 1,6 to 5 mm L.14 mm	30 pcs
ECE30L*	Yellow Large brush ø from 2,0 to 6 mm L.16 mm	30 pcs
ECE120	Assorted dental brushes green/red/yellow	120 pcs

*Available also in 3/6/120 pcs packaging

IF INTERDENTAL FLOSS

PTFE Dental Floss (tape) ultra-resistant

"Credit card" dental floss with mirror for a perfect cleaning even outdoors.

Ref	Description	Q.ty
ECIF1	IF INTERDENTAL FLOSS Waxed White Credit card with mirror	10 mt
ECIFW	IF INTERDENTAL FLOSS Waxed White. Blister Packaging	50 mt

KISS ME SPRAY

- Practical mouthwash effective against halitosis because it eliminates bacteria that can cause bad breath
- Fresh mint taste - pocket packaging - gas, alcohol and saccharine free

Ref	Description	Q.ty
ECKM1	KISS ME Oral Spray	20 ml

ENAMEL PLUS MULTIPURPOSE TOOTHPASTE

Low abrasion formula (25 RDA).
It protects your teeth and restorations.

- Delicate taste
- No gum irritation
- Strengthens enamel
- Desensitizing properties
- Mild bleaching



Ref	Description	Q.ty
ECEP	Toothpaste tube without box in 24 pcs display box	75 ml
ECEPB	Toothpaste tube with box	75 ml

ENA MATRIX

Ena Matrix
easier than a traditional matrix,
more precise than a sectional matrix

Ni-Ti **RING** for an excellent resistance and elastic memory which guarantees a long duration and precise contacts. Autoclavable plastic tines reinforced with glass fibre, for an extraordinary retention and a better adjustment to the tooth surface to create a cavity with an ideal shape which allows to save time during finishing. Available in 2 sizes, "Standard" and "Narrow", to ensure an optimal separation strength even in the smaller teeth.

Anatomical **MATRIX**
Anatomical cervical shape with marginal ridges to reduce the time for finishing. Easier to burnish. Tines with hole which allow the positioning and removal with the specific tweezers without any problem.

The **WEDGES** can anatomically adapt to the interproximal area and allow a complete seal both on the vestibular and lingual side; the special shape does not stress the papilla and prevents the wedge from coming out. Wooden wedges in four sizes are also available.



EMK1N

Ref	Description	Q.ty
EMAM	NiTi "Standard" ring for molar (black)	1 pc
EMAP	NiTi "Narrow" ring for premolars (red)	1 pc
EM35	Sectional Matrix 3,5mm	100 pcs
EM45	Sectional Matrix 4,5mm	100 pcs
EM55	Sectional Matrix 5,5mm	100 pcs
EM65	Sectional Matrix 6,5mm	100 pcs
EMWS	Small plastic wedge (white)	100 pcs
EMWM	Medium plastic wedge (pink)	100 pcs
EMWL	Large plastic wedge (violet)	100 pcs
EMWWXS	Extra small wooden wedge (orange)	100 pcs
EMWWS	Small wooden wedge (white)	100 pcs
EMWWM	Medium wooden wedge (yellow)	100 pcs
EMWWL	Large wooden wedge (pink)	100 pcs
EMP1	Matrix/wedge instrument	1 pc
EMP2	Ring instrument	1 pc
EMK3N	TRIAL KIT ENA MATRIX	
	Sectional Matrix 3,5mm	10 pcs
	Sectional Matrix 4,5mm	10 pcs
	Sectional Matrix 5,5mm	10 pcs
	Sectional Matrix 6,5mm	10 pcs
	Small wedge (white)	10 pcs
	Medium wedge (pink)	10 pcs
	Large wedge (violet)	10 pcs
	Matrix/wedge instrument	1 pc
	Ring instrument	1 pc
	Molar ring (black)	1 pc
EMK1N	KIT ENA MATRIX	
	Sectional Matrix 3,5mm	25 pcs
	Sectional Matrix 4,5mm	25 pcs
	Sectional Matrix 5,5mm	25 pcs
	Sectional Matrix 6,5mm	25 pcs
	Small wedge (white)	25 pcs
	Medium wedge (pink)	25 pcs
	Large wedge (violet)	25 pcs
	Matrix/wedge instrument	1 pc
	Ring instrument	1 pc
	Molar ring (black)	1 pc
	Premolar ring (red)	1 pc



Laboratory

- 44 Resin
- 46 Enamel plus Tender Composite
- 50 Light Curing Units - Vacumix
- 51 Alloy and Investment
- 52 Wax
- 53 Pattern resin
- 54 Instruments & Tender Handsaw
- 55 Router & Electric Saw
- 56 Zircoshiny

ENAMEL PLUS TEMP

Very interesting material for opacity and fluorescence of dentin bodies and for translucency of enamel bodies that allow to put in evidence the typical contrast between these two elements in the natural tooth. Enamel bodies also allow to obtain a natural polishing in temporary crowns, similar to the definitive ceramic elements. It can be used both in laboratory with the help of silicone stent or of vacuum forming matrix with the direct technique using a silicone impression or a preformed crown.



Temporary resin for aesthetic temporary crown and bridge of 2nd generation

TECHNICAL & OPERATING ADVANTAGES

- polymerization in laboratory or in the mouth
- residual monomer less than 0,8%
- it does not exceed 57°C
- high precision of fit
- easy to repair
- cadmium-free, no tertiary amines
- creamy consistency
- VICKERS hardness 140 MPa
- modulus of elasticity: 2300N/mm²

TECHNICAL STUDY



Teeth before the preparation



Dentine placed into the impression



Cemented and finished temporary

TECHNICAL LABORATORY



Stent and dentine pouring



Characterizations with stains and clear



Enamel pouring and final polishing



New fluorescent bodies for aesthetic temporary with higher brightness and excellent integration

Ref	Description	Q.ty
TEMP3	TEMPORARY RESIN COMPLETE KIT	
	6 dentine Enamel plus Temp: UD1 (A1), UD2 (A2), UD3 (A3), UD3,5 (A3,5), UD4 (A4), UD5	6x50 g
	4 enamel Enamel plus Temp: WHITE, CLEAR, GREY, BLUE	4x50 g
	3 universal enamel Enamel plus Temp: UE1, UE2, UE3	3x50 g
	Enamel plus Temp PINK for gum	1x50 g
	Self curing liquid Enamel plus Temp	100 ml
	Hot curing liquid Enamel plus Temp for stent	25 ml
	Hot curing liquid Enamel plus Temp for flask	25 ml
	Light curing liquid Enamel plus Temp	10 ml
	TEMP1N	TEMPORARY RESIN INTRODUCTORY KIT
4 dentine Enamel plus Temp: UD2 (A2), UD3 (A3), UD3,5 (A3,5), UD4 (A4),		4x50 g
2 enamel Enamel plus Temp: UE2, Blue		2x50 g
Self curing liquid Enamel plus Temp		100 ml
TEMP10N	TEMPORARY RESIN TRIAL KIT	
	4 dentine Enamel plus Temp: UD2 (A2), UD3 (A3), UD3,5 (A3,5), UD4 (A4),	4x10 g
	1 enamel Enamel plus Temp UE2	1x10 g
	Self curing liquid Enamel plus Temp	25 ml



Ref	Description	Q.ty
TEMPUDO	Enamel plus Temp dentine UD0	100 g
TEMPUD1	Enamel plus Temp dentine UD1 (A1)	100 g
TEMPUD2	Enamel plus Temp dentine UD2 (A2)	100 g
TEMPUD3	Enamel plus Temp dentine UD3 (A3)	100 g
TEMPUD3,5	Enamel plus Temp dentine UD3,5 (A3,5)	100 g
TEMPUD4	Enamel plus Temp dentine UD4 (A4)	100 g
TEMPUD5	Enamel plus Temp dentine UD5	100 g
TEMPB1	Enamel plus Temp dentine B1	100 g
TEMPB2	Enamel plus Temp dentine B2 (62)	100 g
TEMPB3	Enamel plus Temp dentine B3 (65)	100 g
TEMPB4	Enamel plus Temp dentine B4	100 g
TEMPC2	Enamel plus Temp dentine C2	100 g
TEMPD3	Enamel plus Temp dentine D3	100 g
TEMPUE1	Enamel plus Temp universal enamel UE1	100 g
TEMPUE2	Enamel plus Temp universal enamel UE2	100 g
TEMPUE3	Enamel plus Temp universal enamel UE3	100 g
TEMPS3	Enamel plus Temp enamel WHITE	100 g
TEMPOB	Enamel plus Temp enamel BLUE	100 g
TEMPT	Enamel plus Temp enamel CLEAR	100 g
TEMPGR	Enamel plus Temp enamel GREY	100 g
TEMPDOL	Enamel Temp Dentopaq Light	100 g
TEMPDOD	Enamel Temp Dentopaq Dark	100 g
TEMPMO	Enamel Temp Orange Modifier	100 g
TEMPMY	Enamel Temp Yellow Modifier	100 g
TEMPPP	Enamel plus Temp PINK for gum	100 g
TEMPL	Enamel plus Temp self curing liquid	100 ml
TEMP1-L	Enamel plus Temp self curing liquid	1000 ml

Ref	Description	Q.ty
TEMPLH	Enamel plus Temp hot curing liquid	100 ml
TEMPLPRESS	Enamel plus Temp hot curing liquid for flask	100 ml
TEMPLC	Enamel plus Temp light curing liquid	10 ml
TOA2	Opaque Temp universal light curing	3 g
TEMPISO	Plaster resin separator Micerium	50 ml
COSSHINYSHP	Goat brushes HP Micerium	12 pcs
TEMP99	Temp Stick polishing paste Micerium	100 g

"Temp" Discs for CAD/CAM, available in two thicknesses in colour Universal and Light

for temporary characterization please see Temp Colour System Stains Aesthetic section page 34



Other types of blocks for CAD CAM can be produced on request

Ref	Description	Q.ty
TC15UD1	Temp CAD CAM Disc diam.98,5mm x 15mm UD1 (A1) Light	1 pc
TC15UD3	Temp CAD CAM Disc diam.98,5mm x 15mm UD3 (A3) Universal	1 pc
TC20UD1	Temp CAD CAM Disc diam.98,5mm x 20mm UD1 (A1) Light	1 pc
TC20UD3	Temp CAD CAM Disc diam.98,5mm x 20mm UD3 (A3) Universal	1 pc

ENAMEL PLUS TENDER

Appearance of natural tooth, technique and aesthetics of ceramic

Micro-hybrid composite that can be used both directly in the mouth and in laboratory with a high elasticity dentine body, a paste opaque and a bonding that guarantees a unique adhesion.

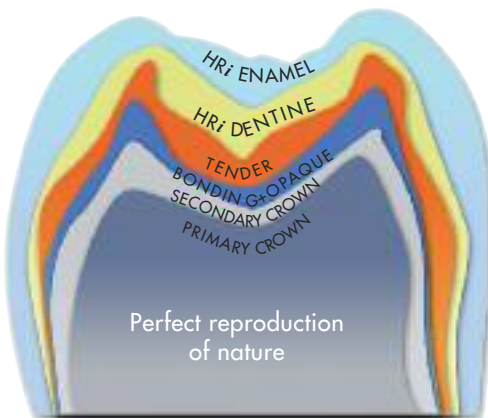
TENDER: high elasticity dentine body

HRi: high resistance enamel body

THE WINNING MATCH

LIKE CERAMIC BETTER THAN CERAMIC ...

It is possible to make adjustments also in the dental practice with the same material used in the laboratory. Enamel Plus HRi can be used both for luting, making in that way at the same time a relining of the manufactured article, and as a liner, before taking the impression (available also "flow"). It allows more possibilities in implant solution and it is ideal for combined cases.



Complex fractures (Dr. Lorenzo Vanini)



Cementation and possible adjustments made always with the same material



Preparation: "HFO Flow" can be used as liner.



Composite inlay cemented with "HFO OW" (Dr. Lorenzo Vanini)



Composite build up on implants:
Tender opaque



Pressing technique with flask: Dentine



Pressing technique with flask: Enamel



Completed case by Mr. D. Rondoni



Ref	Description	Q.ty
TENDER1H	ENAMEL PLUS TENDER INTRODUCTORY KIT	
	7 Tender: T2, T3, T4, T5, MW, MO, MY	7x2,5g
	4 dentine HRi: UD2 (A2), UD3 (A3), UD4 (A4), UD5	4x2,5g
	3 universal enamel HRi: UE1, UE2, UE3	3x2,5g
	1 intensive enamel: Intensive White Spot (IWS)	2,5g
	1 opalescent enamel OBN	2,5g
	2 paste opaque: light, clear	2x3g
	1 Tender bonding metal primer	2,5ml
	2 Temp Chips retentions: standard, micro	2x10g
	1 Temp Chips adhesive	20 ml
TENDER7H	ENAMEL PLUS TENDER INLAYS KIT	
	1 Tender: T4-MO	2x2,5g
	3 dentine HRi: UD2 (A2), UD3 (A3), UD4 (A4),	3x2,5g
	1 universal enamel HRi: UE2	2,5g
	1 Stain Brown2	3g

PRESSING TECHNIQUE WITH FLASK

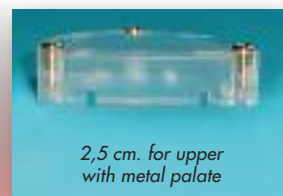
Plexiglass flask for pressing technique

Long bridges, combination works, partials, perio-overdenture

- Easy: wax-up instead of composite modellation
- Fast: save up to 70% working time
- Accurate: better surface
- Measures: 10,5 x 8,6 cm x max 5,5 cm
- 2 special inserts for reducing silicone use
- 1 universal base
- 2 covers with different heights



Ref	Description	Q.ty
TENDERFLASK	TENDER FLASK SPECIAL PLEXIGLASS flask for composite: plexiglass base plexiglass covers plexiglass inserts	1 pc 2 pcs 2 pcs



Tender Flask In-press for composite usable with plaster model

Toronto bridge, total prosthesis, surgical Guide, temporaries, Bite, model duplication, composite crown & bridge

Measures: 10,4 x 10,6 cm x h 7,5 cm

Flask with covers made of different materials:

- Crystal cover for composite, available in two different heights
- Glass fibre cover for acrylic with silicone mould
- Aluminium cover for acrylic with plaster mould



Verticulator for resin and composite



Ref	Description	Q.ty
TXF1	COMPLETE TENDER FLASK IN-PRESS Aluminium base Stainless steel pins "standard" Polished aluminium cover Black glass fibre cover Polycarbonate crystal cover "standard" Stainless steel pins "small" Polycarbonate crystal cover "small" Tender Tray 4 base with magnet Metal discs for Magnets for Tender Tray 4 Stainless steel latch with click closure Pressure plate Plaster extractors Closing caps for upper holes Filling spheres	1 pc 3 pcs 1 pc 1 pc 1 pc 3 pcs 1 pc 2 pcs 4 pcs 1 pc 1 pc 2 pcs 4 pcs 1 pc 1 pc 2 pcs 6 pcs 100 pcs
TXF2	TENDER FLASK SMALL for composite Aluminium base Stainless steel pins "small" Polycarbonate Crystal cover "small" Tender Tray 4 base with magnet Metal discs for Magnets for Tender Tray 4 Stainless steel latch with click closure Pressure plate Plaster extractors Filling Spheres	1 pc 3 pcs 1 pc 2 pcs 4 pcs 1 pc 1 pc 2 pcs 100 pcs
TXF5C	VERTICULATOR for composite cover + base with spacer and locks	1 pc
TXF5B	VERTICULATOR for resin/ceramic cover + base with spacer and locks	1 pc
TXF5CC	Verticulator transparent cover for composite	1 pc
TXF5BC	Verticulator black cover for resin	1 pc
TXF5FG	Spacer and locks for verticulator	12+3 pcs
TXF12	TENDER TRAY 4 MAGNETIC flat without retentions for split cast	5 pcs
TXF22	Metal discs for Magnets for Tender Tray 4	5 pcs
TXF41	Filling Spheres	100 pcs
TXF1B	Tender Flask alluminium base (mould for split cast)	1 pc

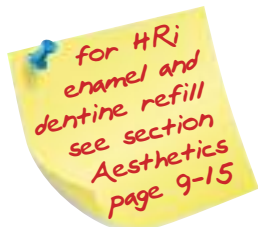
TENDER



TENDER REFILL

Ref	Description	Q.ty	Ref	Description	Q.ty
ETT2	Tender T2 (A1, A2)	5 g	ETBOND	Ena Tender bond	5 ml
ETT3	Tender T3 (A3)	5 g	ETOCLEAR	Tender paste opaque clear for first layer	3 g
ETT3,5	Tender T3,5 (A3,5)	5 g	ETOL	Tender paste opaque light (UD1, UD2, UD3)	3 g
ETT4	Tender T4 (A4)	5 g	ETOD	Tender paste opaque dark (UD3,5, UD4)	3 g
ETT5	Tender T5	5 g	TEMPF	TEMP BONDING FLUID for correction/bonding of resin-composite and composite-composite	10 ml
ETMW	Tender MW white modifier (white)	5 g	TORS10	Temp Chips Micerium Standard retention	10 g
ETMY	Tender MY yellow modifier (yellow)	5 g	TORM10	Temp Chips Micerium Micro retention	10 g
ETMO	Tender MO orange modifier (orange)	5 g	TORA	Temp Chips Micerium Adhesive for retention	20 ml
COSSTAINT	Stain flow transparent	2 g	TEMPSEAL	Temp Seal Micerium plaster sealing	1 pc
PLEXI26	Plexiglass syringe holder transparent 26 holes	1 pc	TEMPSEP	Temp Sep wax-composite-ceramic separator	1 pc
PLEXI26D	Plexiglass syringe holder dark 26 holes	1 pc	TEMPSILV	Silver powder for checking texture	30 g
PLEXI9	Plexiglass syringe holder transparent 9 holes	1 pc	COSSCALATS	Tender, Pink, Stain shade guide 21 Colours	1 pc

Note: Tender bodies can also be used for B, C and D colours of Vita® shade guide



ENA TENDER STAIN

Light curing acrylic stains ideal for characterization of:

- fixed and combined composite prosthesis
- resin and composite temporary
- removable prosthesis



Ref	Description	Q.ty
ETSK	Light curing stain Complete Kit White, red, blue, brown, dark brown, black khaki, orange, yellow, primer, cleaner, 2 brushes	9x3 g
ETSK7	Light curing stain Introductory Kit White, red, blue, brown, dark brown, khaki, orange, primer, 2 brushes	7x3 g

Ref	Description	Q.ty
ETS1	Light curing stain white	3 g
ETS3	Light curing stain blue	3 g
ETS4	Light curing stain brown	3 g
ETS5	Light curing stain dark brown	3 g
ETS6	light curing stain black	3 g
ETS7	Light curing stain yellow	3 g
ETS8	Light curing stain orange	3 g
ETS9	Primer (Thinner)	3 g
ETSR	Light curing stain red	3 g
ETSCA	Light curing stain khaki	3 g
ETSCL	Cleaner	50 ml

COMPOSITE & OPAQUE FOR GUM LIGHT-CURING INDIVIDUAL TRAY & RESIN STAINS



Partial



Application of pink opaque



Opaque composite



Combined prostheses in Tender composite and resin

TENDER PINK COMPOSITE

Light curing composite pink for gingival flange
Pink opaque for partial



Ref	Description	Q.ty
ETPKIT	Tender Pink Kit Light curing composite pink Pink Orange, Pink Light, Pink Dark, Pink Transparent Pink paste opaque Ena Tender Stain: Red, Blue, White	4x2,5 g 1 g 3x3 g
ETP	Tender Pink Orange	5 g
ETPL	Tender Pink Light	5 g
ETPD	Tender Pink Dark	5 g
ETPT	Tender Pink Transparent	5 g
ETOP	Pink paste opaque light curing for covering partial	3 g
ETFP	Tender Pink Orange Flow	2 g

TENDER ACRYL RESIN

Self-curing resin for removable and combined prosthesis with low monomer residual and natural chromatic characteristics.

- High colour stability
- High mechanical values
- High compactness reduces polishing time
- High fitting precision
- Low monomer residual



Ref	Description	Q.ty
TAL1	Tender Acryl liquid	1000 ml
TAL5	Tender Acryl liquid	500 ml
TAP01	Tender Acryl Pink powder opaque	1 Kg
TAP05	Tender Acryl Pink powder opaque	500 g
TAPT1	Tender Acryl Pink powder transparent	1 Kg
TAPT5	Tender Acryl Pink powder transparent	500 g
TAPF	Tender Acryl Pink Fibrillae	5 g

TEMP SILIC SILICONE

Special silicones for stent, ideal also for transparent flask



Ref	Description	Q.ty
TEMPSMK	SILICONE KIT FOR TENDER FLASK Silicone for stent/flask 90 shore A+B+retarding Silicone for stent clear 55 shore cartridge Silicone-flask separator	300 g 50 ml 200 ml
TEMPSMR3	Silicone for stent and flask 90 shore Paste A white, Pasta B blue + retarding	1,5+1,5 Kg
TEMPSMR10	Silicone for stent and flask 90 shore Paste A white, Pasta B blue + retarding	5+5 Kg
TEMPSM10	Silicone retarding for flasking technique	10 ml
TEMPSMT	Silicone for stent clear 50 shore cartridge working 1'30"-2'30", hardening 15-20 min	50 ml
TEMPSMT5	Silicone for stent clear 55 shore cartridge working 1'30"-2'30", hardening 15-20 min	5x50 ml
TEMPSI	Silicone-flask separator	200 ml
TDPUN25	Mixing tips	25 pcs

LIGHT CURING UNIT

Light curing units for resin and composite

Ref	Description	Q.ty
LABORLUX3	Light curing unit 300 Watt with timer and revolving plate for light curing of all materials 310-500 nm	1 pc
LABORLUXL-L	Refill bulb 300 Watt for LABORLUXL/3	1 pc



VACUUM MIXER VACUMIX WD700

Just a finger with...Vacumix

WD700 mixer combine use simplicity with optimal performances. Suitable for mixing WITHOUT AIR every type of plaster, investment and silicone. Powerful and silent, equipped with vacuum pump that works also for dry-mixing and electronic timer. Available with wall or table support. The unit is equipped with a 500 cc bowl. Available on request 5 type of bowl with different size: 200, 500, 1000, 2000 cc. Available on request the WD700A model with adjustable speed.



TECHNICAL FEATURES

Voltage	230 V - 140 W
Motor	12 N/M
Speed	400 RPM
Pump	-0,8 bar, 10 lt per min.
Base	220x160 mm (300x280 mm table support)
Height	300 mm (615 mm table support)
Weight	8,5 Kg (10 Kg table support)

Ref	Description	Q.ty
WD700	VACUUM MIXER 400 RPM 0,8 BAR also for partials, 500 cc bowl both wall and table support	1 pc
WD711	Mixing bowl 200 cc with filter	1 pc
WD712	Mixing bowl 500 cc with filter	1 pc
WD713	Mixing bowl 1000 cc with filter	1 pc
WD714	Mixing bowl 2000 cc with filter	1 pc
WD711A	Mixing bowl 200 cc for alginate	1 pc

ALLOY AND INVESTMENT FOR CROWN & BRIDGE

COMPOSITION

PHYSICAL PROPERTIES

NS Metal50 **M** NMICERIUM

	NS Metal50	M NMICERIUM
Nickel	-	76,5%
Chromium	27%	14%
Molybdenum	6%	4,5%
Cobalt	61,6%	-
Tungsten	5%	-
Vickers Hardness	350	440
Elongation %	10,3	9
Stress Prof (Mpa)	475	784
Casting temperature	1421°C	1385°C
Expansion coefficient	14,1x10 ⁻⁶	14,3x10 ⁻⁶

NS Nickel free alloy for porcelain anallergic
M Specially suited for european porcelain



Ref	Description	Q.ty
METAL50	NS chrome cobalt for porcelain Available also box 100 g	1 Kg
NMICERIUM	M nickel chrome for crown and bridges in porcelain Available also box 100 and 500 g	1 Kg
METAL2	Welding rod for nickel chrome	8 g

Ref	Description	Q.ty
METAL9BIS	Soldering flux for nickel chrome solid	1 jar
NNIRAVESTFIRE	Microfire fast investment, fine grain for precious and not precious alloys 100 bags 90 g with liquid	9 Kg 1 lt
NNIRAVESTL	Liquid for Microfire Investment	1 lt

ALLOY NICKEL FREE FOR PARTIAL NIRANIUM

COMPOSITION

PHYSICAL PROPERTIES

PL NPL **NH** NNH

	PL NPL	NH NNH
Cobalt	66%	62%
Cobalt & Vanadium	-	-
Chrome	27%	30%
Molybdenum	5%	6%

Vickers Hardness	435	444
Elongation %	3,5	3
Stress proof (Mpa)	600	611
Casting temperature	1482°C	1454°C



Ref	Description	Q.ty
NPL (METAL20)	PLADINIUM PL chrome cobalt alloy without Nickel with platinum and palladium for precise casting. High flexibility and polishing	1 Kg
NNH (METAL1)	NH Chrome cobalt alloy without Nickel Special Hard high carbonium content for stiffer casting	1 Kg
METAL14	Welding rod for chrome cobalt	25 g
METAL9	Soldering flux for chrome cobalt	1 jar











PL Platinum & Palladium give hardness, gloss and prestige

NH Balanced formula of hardness and elasticity Ingots

MICERIUM FLEX WAXES FOR FIXED & REMOVABLE PROSTHETIC APPLIANCE

HIGH QUALITY WAXES FOR CASTING AND MODELLING



Ref	Description	Q.ty
F54G	 FLEX-E-Z GREEN It doesn't require a separator, with memory ideal for inlay, millings and precision castings	4 oz
F55G	 FLEX-E-Z GREEN	1 lb
F54B	 FLEX-E-Z BLUE It doesn't require a separator, with memory ideal for inlay, millings and precision castings	4 oz
F55B	 FLEX-E-Z BLUE	1 lb
F54W	 FLEX-E-Z WHITE for aesthetic modelling	4 oz
F55W	 FLEX-E-Z WHITE for aesthetic modelling	1 lb
F54V	 FLEX-E-Z IVORY for aesthetic modelling	4 oz
F54P	 FLEX PURPLE extra hard no retraction, ideal for margins	4 oz
F55P	 FLEX-E-Z PURPLE	1 lb
F55ZB	 FLEX FOR CROWN & BRIDGE regular blue	1 lb

WAXES FOR REMOVABLE APPLIANCE WITHOUT RETRACTION



Ref	Description	Q.ty
F95H	HARD WAX PINK SHEETS ideal for PERFORM INKOVAC strong but flexible resistant till 55°C without alteration, scientific formula of fine virgin waxes	5 lb
F85H	HARD WAX PINK SHEETS 10 sheets	200 g
F95A	ALL SEASON WAX PINK SHEETS ideal all season	5 lb

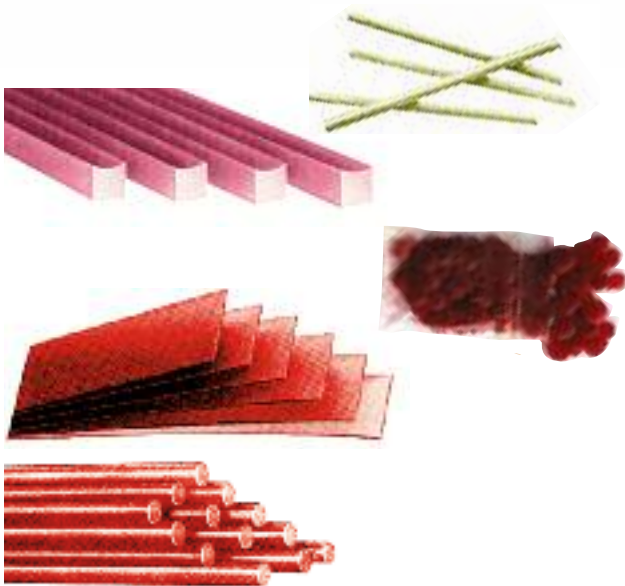
WAXES CASTING FOR PARTIALS



Ref	Description	Q.ty
from F02A to F08A	ADHESIVE CLEAR CASTING WAX available in these thickness in mm: 0,25 (F02A), 0,3 (F03A), 0,4 (F04A), 0,5 (F05A), 0,6 (F06A), 0,8 (F08A)	32 sheets
from NCASTINGW03 to NCASTINGW08	GREEN CASTING WAX available in the measures: 0,3 - 0,4 - 0,5 - 0,6 - 0,8 mm	32 sheets

MICERIUM FLEX CASTING AND UTILITY WAXES

UTILITY WAXES



Ref	Description	Q.ty
F67Y	YELLOW STICKY WAX available in sticks of 12 cm. special formula fast hardening, stiff for removal with no residuals	100 g
F66P	PINK BITE STICKS WAX concave for an easier adaptation to the crest, special formula guarantees high precision bite reproduction	1 lb
F65R	DIPPING WAX RED dipping and coating die wax, high memory retention	1 lb
F66R	FLEX RED BOXING WAX STRIPS high thickness (1mm) for boxing stone or polyurethane impression, high adhesion, no heat needed	1 lb
F67R	FLEX RED BOXING WAX ROPES ideal for model repair and build up; usable also with the boxing wax strips, under the margin impression	1 lb

BURN-OUT SELF-CURING PATTERN RESIN

Burn-out self-curing pattern resin without shrinkage for accurate casting

Burn-out self curing pattern resin for fabrication of secondary crowns, fixations for soldering, bridges, anchors, attachments, post and core, etc. It can be used in both dental office and laboratory by mixing powder and liquid or with brush technique.



Post and core

Secondary crowns

Milling (and Maryland bridges)

OPERATING ADVANTAGES

- Burns out completely
- Minimal shrinkage <1%

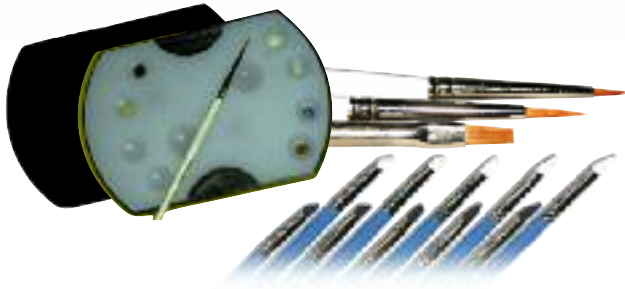


Ref	Description	Q.ty
TR100	TEMP RED BURN-OUT SELF-CURING PATTERN RESIN powder 100 g + liquid 100 ml	2 pcs
TR100P	Temp Red powder refill	100 g
TR100L	Temp Red liquid	100 ml

INSTRUMENTS

MICERIUM BRUSHES

Bristle & rubber tip brushes



Ref	Description	Q.ty
COSSTAIN01	Mixing palette with cover	1 pc
COSPEN11	Brush C for stains	1 pc
COSPEN12	Brush F for fossa	1 pc
COSPEN13	Brush M for manipulation	1 pc
TPENS	Soft white silicone brush	5 pcs
TPENN	Hard black silicone brush	5 pcs

MICERIUM INSTRUMENTS

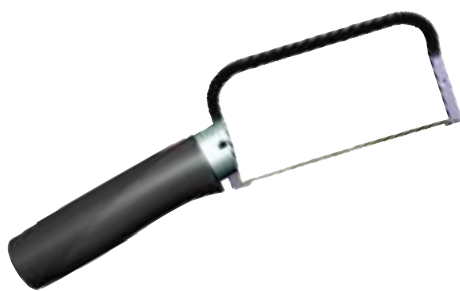
For laboratory



Ref	Description	Q.ty
TDRK1	INSTRUMENTS KIT FOR COMPOSITE Instruments with inox steel tip Assorted ultra flexible screwable tips	3 pcs 3 pcs
TRAG	Ultra flexible tip shape A grey	2 pcs
TRBG	Ultra flexible tip shape B grey	2 pcs
TRCG	Ultra flexible tip shape C grey	2 pcs
TDRK2	Carving instrument Kit PKT + Lecron	6 pcs

ANATOMICAL HANDSAW

It allows a better view of the area that you're going to cut. Perfectly balanced to get fast and precise cuts. Adjustable inclination also for left-handed people.



Ref	Description	Q.ty
TX001	TENDERX HANDSAW 0,18 mm blue blade 0,25 mm gold blade	1 pc 1 pc 1 pc
TX018	0,18 mm blue blades	12 pcs
TX025	0,25 mm gold blades	12 pcs
TX018B	0,18 mm blue blades	100 pcs
TX025B	0,25 mm gold blades	100 pcs



STAINLESS STEEL MOSQUITO FORCEPS & CALIPER



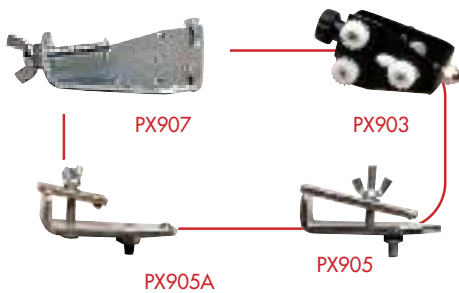
Ref	Description	Q.ty
WD1	Straight stainless steel haemostatic Mosquito forceps	1 pc
WD2	Curved stainless steel haemostatic Mosquito forceps	1 pc
WD3	Brushed stainless steel caliper for metal	1 pc
SDI4	Brushed stainless steel caliper for wax	1 pc

PRECISION CUTTING: PX901A

Easier, faster and safer

TECHNICAL FEATURES

Voltage	220-230 V, 50 Hz,
Absorption	100 W
Base	200x420 mm
Height	340 mm
Weight	10 Kg
Blade	80 mm (hole 16 mm)
Thickness	0,2 mm



Ref	Description	Q.ty
PX901A	ELECTRIC SAW FOR REMOVABLE DIES with modelholder and adjustable base	1 pc
PX903	Modelholder for Accutrac	1 pc
PX904	Blade	1 pc
PX905	Modelholder for Tricodent	1 pc
PX905A	Modelholder for Model Tray	1 pc
PX906	Adjustable metal base for support	1 pc
PX907	Modelholder for Dowel Pins, Pindex, etc.	1 pc

ROUTER FOR MODELS RUTEX PX801-CE

For excellent model finishing

TECHNICAL FEATURES

Voltage	220-230 V, 50 Hz, 370 W
Base	300x210 mm
Height	300 mm
Weight	10 Kg
Motor Power	1/2 CV
Tool connector	ø 6 mm



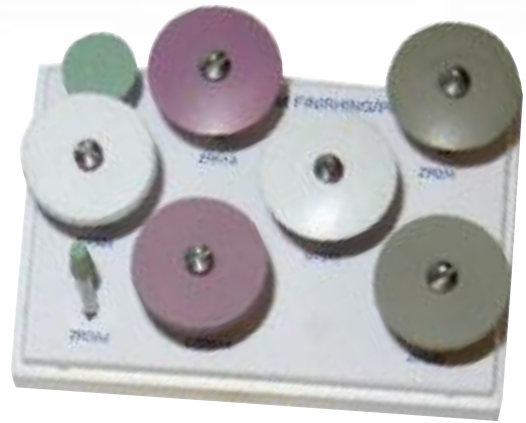
Ref	Description	Q.ty
PX801-CE	ROUTER FOR MODELS RUTEX WITH CYLINDRICAL BUR and higher base for split-cast	1 pc
PX805CE	Rutex cylindrical bur 10x20 mm	1 pc
PX807CE	Rutex tapered bur	1 pc
PX808CE	Rutex ball bur	1 pc
PX809CE	Rutex inverted cone bur	1 pc

ZIRCOSHINY

Abrasives and diamond polishers for zirconia - ceramic & composite

FINISHING & POLISHING KIT FOR ZIRCONIA & CERAMIC

Ref	Description	Q.ty
ZR1000	Finishing and polishing Kit for Ceramic and Zirconia, containing:	
	Green grinder taper end ZRG02	1 pc
	Green grinder wheel ZRG01	1 pc
	White silicone wheel D7504	1 pc
	White silicone knife edge D7510	1 pc
	Pink diamond silicone wheel ZR014	1 pc
	Pink diamond silicone knife edge ZR013	1 pc
	Grey diamond silicone wheel ZR025	1 pc
	Grey diamond silicone knife edge ZR024	1 pc



POLISHERS FOR ZIRCONIA & CERAMIC

Ref	Shape	Ref	Shape
D7503		D7509	
ZR014		ZR013	
ZR025		ZR024	

- White silicone: Coarse for finishing 12 pcs
- Pink diamond silicone: Medium for polishing 1 pc
- Grey diamond silicone: Extra-Fine for high-shine 1 pc

DIAMOND ABRASIVES FOR ZIRCONIA & CERAMIC

Ref	Grinder Wheel HP	Ref	Grinder Taper End HP	Ref	Grinder Taper End HP
ZRG01		ZRG02		ZRG03	

Green: Finishing of zirconia 1 pc

DIAMOND DISC

Ref	Description	Disc	1 pc
ZR915CF	Diamond disc for zirconia d/s ø 19 mm x 0,16 mm		
D751	Diamond disc superflexible d/s ø 22 mm x 0,15 mm		
D752	Diamond disc superflexible s/s ø 22 mm x 0,10 mm		

DIAMOND BURS HP

Ref	Description	Shape	1 pc	Ref	Description	Shape	1 pc
D713	23/4030			D725	501/016		
D714	42/4030			D726	537/016		
D716	48/4030			D727	558/016		
D717	71/4030			D728	559/023		
D718	212/4020			D729	563/014		
D719	212/4030			D730	563/018		

DIAMOND PASTE FOR CERAMIC & COMPOSITE FOR LABORATORY

Ref	Description	Q.ty
ESA20	Ena Shiny A 3µm paste for composite	20 g
ESB20	Ena Shiny B 1µm paste for composite	20 g
ZRZ20	Zirco Shiny Z paste for ceramic/zirconia	20 g
ZRSHP	HP brush for Zirco Shiny Z paste	12 pcs





Master Catalogue



Micerium S.p.A.

Via G. Marconi, 83 - 16036 Avegno (GE)
Tel. 0185 7887 880 • Fax 0185 7887 970
hfo@micerium.it • www.micerium.com