
B&L BIOTECH

Where Innovation Meets Excellence



B&L BIOTECH

**WHERE
INNOVATION
MEETS
EXCELLENCE**

B&L Biotech was established by several dentists. These dentists, who specialize in endodontics, share a common goal of providing and improving the quality of treatment and patient care with unprecedented innovation, excellence, quality, service, and product development.

B&L is one of the fastest rising companies in the global dental community. B&L introduced the first cordless heated plugger system and gutta percha delivery system, known respectively as the B&L Alpha II and the B&L Beta. B&L offers many other innovative products including the patented micro-projection ultrasonic tip technology, and continues to strive to develop many more products.

B&L currently services over 40 countries. In May of 2010, B&L opened its first facility in the USA, just outside of Philadelphia, to better serve the global dental community. In December of 2014, B&L relocated its US branch to Northern Virginia

B&L Biotech continues to expand its pipeline of innovative products while maintaining quality, excellence, and service to the worldwide dental community.



- **Obturation Devices**

- **Ultrasonic Tips**

- **Microsurgical Instruments**



Cordless Obturation Devices

SuperEndo- α^2	4
Beta Mini / SuperEndo- β	6
BL-S Kondenser	8

Cordless Curing Light

B&Lite S	9
----------	---



Endodontic Ultrasonic Tip with Micro-projections

BL Tip

10

Removal of Broken Instruments / Troughing & Irrigation

CK Tip

11

Post Removal Tip

VIBRAPOST

11

Implant Scaler Tip

IS Tip

12

Endodontic Microsurgical Ultrasonic Tip with Micro-projections

JETIP

13

Microsurgical Instruments

JETIP Instrument

14

JETIP Instrument Suture Set

JetXchange Instrument Basic Set

16

Micro Mirror Set

B&L Mirror

17

Bendable Periosteal Elevator for Surgical Treatment

LeeTrac

18

KimTrac

19

Cordless Heat Source for Optimal Warm Vertical Condensation

SuperEndo- α^2



Cordless

No limit on usage, reduces fatigue on hand and wrist.

Balance

Great weight distribution for ease of use.

Maximizes user convenience

Unique design that incorporates both cordless and ergonomic features.

Hexagonal keyholes

Six keyholes on the connecting joint of the plugger safely secure and prevent rotation of the plugger during use.

Extended battery time for operator

4 hours of continuous use on a single charge, which is equivalent to about 1 week of endodontic treatment in a busy practice.

Starter Kit

SuperEndo- α^2 with 3 pluggers.(#55/.06, #55/.08, #55/.10) adapter, powercord, charging base

Item Code

Alpha Starter Kits

ASKB(Black), ASKW(White), ASKP(Pink)

Alpha Units and Accessories

Main Device : BAMB(Black), BAMW(White), BAMP(Pink)

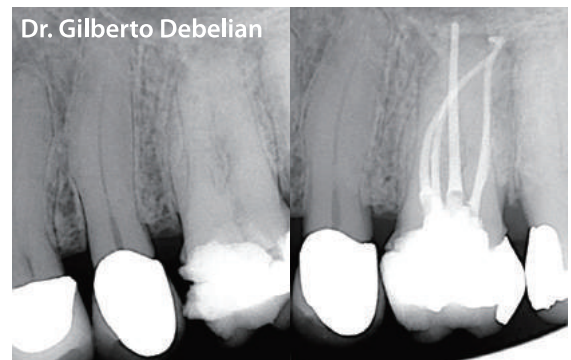
Charging Console : BACCB(Black), BACCW(White), BACCP(Pink)

Battery : BAB

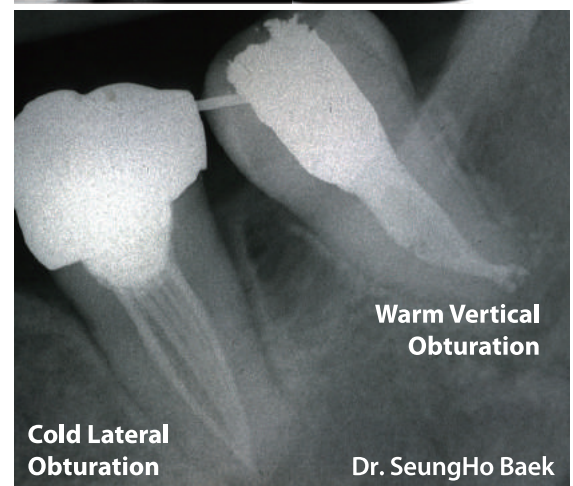
Power Cord : BPC

AC Adapter with Cord and Plug : BAA

Plugger Protect Sleeve(10EA) : BPPS



Dr. Gilberto Debelian



Cold Lateral
Obturation

Warm Vertical
Obturation

Dr. SeungHo Baek

Accessories for SuperEndo- α^2

Baek's Plugger

Baek's Pluggers for SuperEndo- α^2

Wide varieties to choose from: 13 items, including pluggers, spreaders, and a hot testing tip.



BP3004
#30/.04
Blue



BP3504
#35/.04
Blue



BP4004
#40/.04
White



BP4504
#45/.04
Yellow



BP5004
#50/.04
Yellow



BP5506
#55/.06
Red



BP5508
#55/.08
Red



BP5508L
#55/.08
Long Type
Red



BP5510
#55/.10
Green



BP6012
#60/.12
Green



SPRDN
Spreader/
Narrow
Black



SPRDS
Spreader/
Standard
Black



HTT
Hot Testing Tip



Hot Testing Tip



Dr. Andreas

Cordless Gutta Percha Heating and Delivery System for Optimal Backfill

Beta Mini



*Smaller size
Greater convenience*



SuperEndo-β



Cordless

No limit on usage, reduces fatigue on hand and wrist

Balance

Great weight distribution for ease of use

Unique design and engineering

Incorporates 360 degree swivel needles, as well as cordless and ergonomic features, to maximize user convenience.

Secondary safety feature against accidental burns

Thermal protector cap prevents accidental burns from a hot needle

Extended battery time for operator

4 hours of continual use on a single charge, which is equivalent to about 1 week of endodontic treatment in a busy practice.

Starter Kit

Beta mini or SuperEndo-β with needles.
(24mm/20G 2EA, 24mm/23G 4EA, 24mm/25G 2EA)
2 cleaning brushes, 3 thermal protectors, needle bender/wrench
1 regular GP, plunger, powercord, adapter, charging base

Item Code

Superendo - β Starter Kits

BSKB(Black), BSKW(White), BSKP(Pink)

Beta Units and Accessories

Main Device : BBMB(Black), BBMW(White), BBMP(Pink)
Charging Console : BBCCB(Black), BBCCW(White), BBCCP(Pink)
Thermal Protector(3EA) : BTP
Plunger Assembly : BPA

Beta Mini Starter Kits

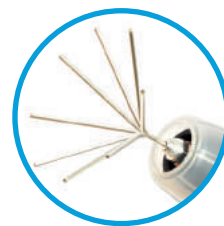
ESKB(Black), ESKW(White), ESKP(Pink)

Beta Mini Units and Accessories

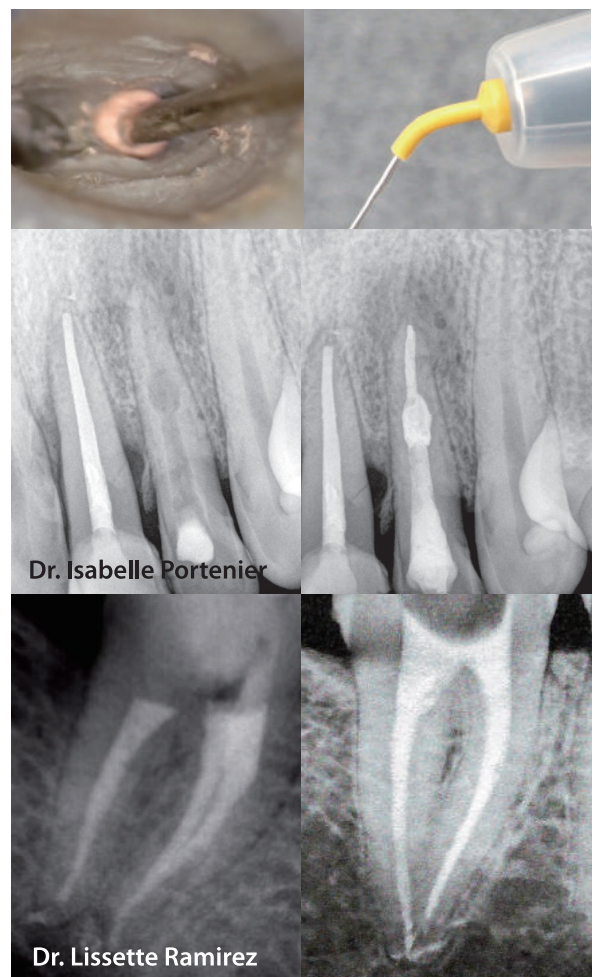
Main Device : EBMB(Black), EBMW(White), EBMP(Pink)
Charging Console : EBCCB(Black), EBCCW(White), EBCCP(Pink)
Thermal Protector(3EA) : ETP
Plunger Assembly : EPA
Cover : ESC

Beta/Beta Mini Compatible Accessories

Battery : BBB
Cleaning Brush(2EA) : BCB
Needle Bender/Wrench : BMT
Needle Protector Sleeve(10EA) : BNPS



Needles swivel for easy access



Dr. Isabelle Portenier

Dr. Lissette Ramirez

Accessories for SuperEndo-β / Beta Mini

Needle



20G

23G

25G



Needles for SuperEndo-β, Beta Mini

Gauge	Length	Item Code
20 G	22 mm	BSN2220
20 G	24 mm	BSN2420
20 G	28 mm	BSN2820
20 G	50 mm	BSN5020 (VET)
23 G	21 mm	BSN2123
23 G	24 mm	BSN2423
23 G	28 mm	BSN2823
25 G	22 mm	BSN2225
25 G	24 mm	BSN2425
25 G	26 mm	BSN2625

Multibending Needles for SuperEndo-β, Beta Mini

Gauge	Length	Item Code
20 G	24 mm	BMN2420
23 G	24 mm	BMN2423
25 G	24 mm	BMN2425



Multi bending needles can be bent multiple times.



Item Code
Brush : BCB



Item Code
Needle Bender/Wrench : BMT

Accessories for SuperEndo-β / Beta Mini

Gutta Percha Pellet



Gutta Percha Pellets for SuperEndo-β, Beta Mini

Type	Quantity of GP	Item Code
Soft	100 EA	BGPSOFT
Regular	100 EA	BGPREG
Hard	100 EA	BGPHARD

Condensation of Obturation Material

BL-S Kondenser



Wide variety

BL-S Kondensers are available individually or in a full set of 4.

Efficiency of use

Handles are color-coded by size allowing faster selection of the desired condenser.

Range of use

BL-S Kondensers are great for any type of canal anatomy.

Multipurpose features

The flexible end, which is made of nickel titanium, can be used for treatment in curved canals. The other end, which is made of stainless steel, is ideal for compaction in the coronal and middle thirds of the canal.

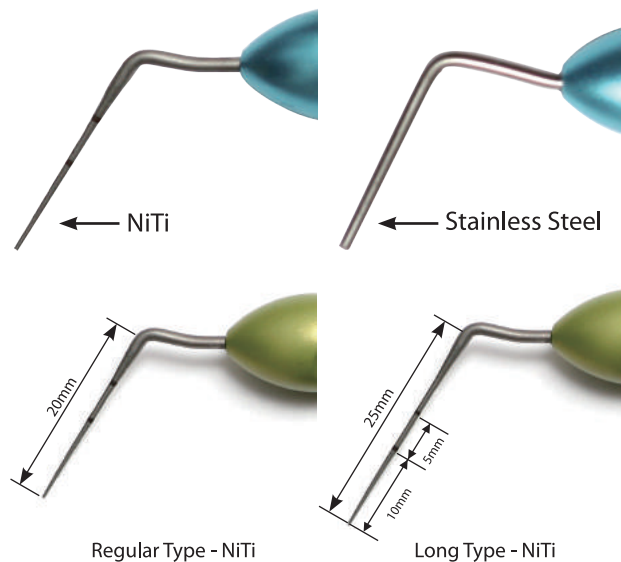
Lightweight design

Handles are designed to fit comfortably into the natural grip of the user.

Increased control

Dimpled grips allow the condenser to be held firmly, increasing the amount of control the user has

Autoclavable



Regular Type - NiTi

Long Type - NiTi

Product information	Item Code
SET of 4 (35, 40, 50, 60)	BCONSET / BCONSET Long Type
35 NiTi / 70 SS	BCON35 / BCON35 Long Type
40 NiTi / 80 SS	BCON40 / BCON40 Long Type
50 NiTi / 100 SS	BCON50 / BCON50 Long Type
60 NiTi / 120 SS	BCON60 / BCON60 Long Type



NiTi flexible end

Cordless Curing Light B&Lite S

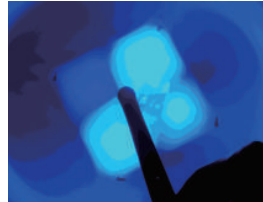


Uniformity and concentration of light level and power

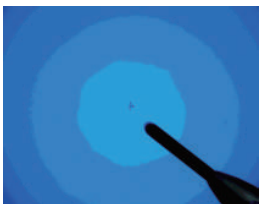
- Large discrepancies in the indicated and actual light levels have been observed in devices manufactured by other companies.



B&Lite S
Excellent focusing power and uniformity



A company
Insufficient beam uniformity



B company
Blurred focus



C company
Blurred focus

Accessibility

The small head of B&LiteS allows the clinician to properly position the curing light in all areas of the mouth with better visibility, without any discomfort to the patient.



B&Lite S



Other Company

The smallest profile head for curing light allows wider visibility.

Special Features

- Uniformity & Concentration of light level and power
 - Multiple mode options (NORM, FAST, SOFT, ORT1, ORT2)
 - Accessibility
 - 360 degrees rotation of light probe
 - Replaceable probe
 - Battery power level does not affect the performance of B&LiteS
Even if the battery is low, the quality of light irradiation is consistent.
- * Light irradiation levels of the devices were measured using a radiometer from Gigahertz-Optik.

Multiple Mode Description



- General Composite Filling Mode (NORM)

Optical output : 800mW/cm



- Fast Mode (FAST)

PEDO Composite filling Mode
Optical output : 1200mW/cm



- Soft Start Mode (SOFT)

After gradually increasing, maintain the output level until finished use
Optical output : 0 to 1200mW/cm



- Orthodontic Mode-1 (ORT1)

For Orthodontic brackets.
Optical output : 1800mW/cm



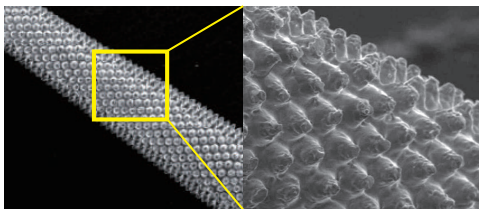
- Ortho Mode-2 (ORT2)

Optical output : 2700mW/cm

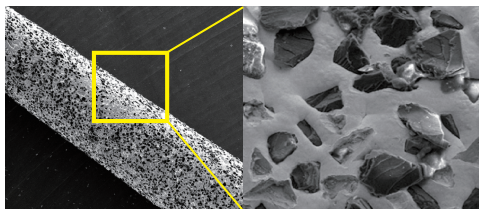
B&Lite S and Accessories	Item Code
B&LiteS Kit	CL-SBL
Light Probe for B&LiteS	CL-SLP
Light Probe Thermal Guard for B&LiteS	CL-SLG
Battery Pack	CL-GBP
Charging Stand	CL-GCS
Charging Stand Base	CL-GCG
AC Power Adapter	CL-GPA
Light Shield	CL-GAS

Endodontic Ultrasonic Tip with Micro-projection

BL TIP



BL TIP with Micro-projections



Diamond Coated Tip

Manageable Elimination with a Variety of Shapes and Sizes

The ends of the BL Tips come in a variety of shapes and sizes, making it convenient for the doctor to effectively control the amount of dentin removal.

100µm Micro-projections : ideal for removing larger quantities of dentin.

50µm Micro-projections : ideal for more precision-based refinement.

Versatility

BL Tips are useful not only in accessing the root canal, but also in enlarging the coronal aspect of the root canal because the end of the tip works in every direction.

Item Code

Starter Kit : BLSKA(BL1,3,5 Satelec), BLSKE(BL1,3,5 EMS)

EMS

BL1E, BL3E, BL5E

Satelec

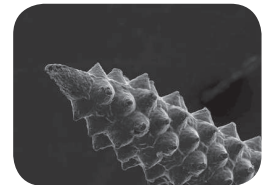
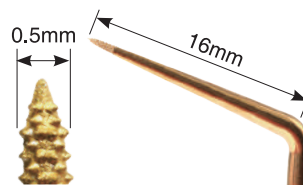
BL1A, BL3A, BL5A

B&L Endodontic Ultrasonic Tip

Longevity and Safety with Micro-projections

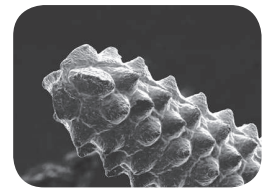
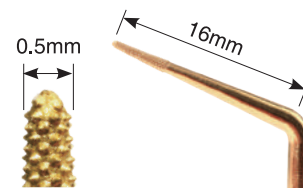
BL Tips have sharp abrasive micro-projections integrated onto the main body of the tip.

Unlike conventional diamond-coated endodontic tips whose coating wears off during surgery, BL Tips are more resilient and efficient in cutting.



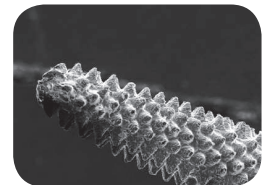
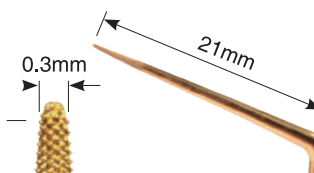
BL-1 (100µm Micro-projections)

Removal of pulp stone, calcified dentin. Location of the MB2 canal and hidden canals Removal of gutta percha and paste materials.



BL-3 (100µm Micro-projections)

Use at a higher power, higher speed. Removal of secondary dentin and pulp stones. Resistance to breakage.






BL-5 (50µm Micro-projections)

Smaller & longer than BL-1

Sharper and longer shape allows efficient preparation of the coronal half of the canal and creates a space for the insertion of a file.

Appropriate power level

			
	BL-1	BL-3	BL-5
SATELEC®	20% · 30%		Under 20%
EMS®	10% · 20%		Under 10%

E-Type not available for sale in the US.

Removal of Broken Instruments / Troughing & Irrigation

CK Tip



CK TIP with CK TIP-File
for Irrigation

CK TIP with CK TIP-Needle
for Troughing

For ultrasonic energy in a root canal

Ultrasonic vibration through a file ensures an efficient cleaning of the root canal system through acoustic micro-streaming.

Compatibility	Bent Angle	Item Code
EMS scaler	120°	CK1E
SATELEC scaler		CK1A
EMS scaler	90°	CK2E
SATELEC scaler		CK2A

E-Type not available for sale in the US.

CK Tip-Needle

Removal of separated files.

Useful in removing dentin. (troughing)

Isthmus control.

Before working with the Vibrapost, use the CK TIP-Needle to trough around the post allowing the Vibrapost to work more efficiently.

CK Tip-File

Irrigation File #20

Item Code	Recommended Power Level
CKF20	10%

Item Code

CK Chuck Tip : CK1E, CK2E, CK1A, CK2A

CKTip-File(Irrigation File #20) : CKF20

CKTip-Needle : KKN

Post Removal Ultrasonic Tip

VIBRAPOST



The best choice for removing a post from a root canal

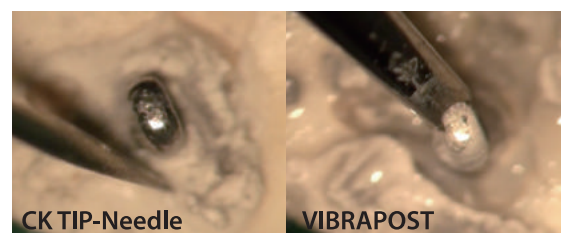
The most efficient shape to constantly deliver the highest ultrasonic energy.

Recommended Power Level	Item Code
60% Power	VP-A(SATELEC)
	VP-E(EMS)

E-Type not available for sale in the US.

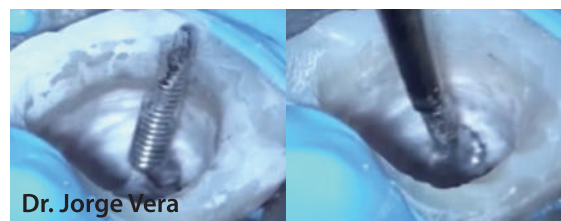
Caution!

In order to avoid potential damage to the periodontal ligament from excessive heat, be sure to work with water and refrain from engaging the post for more than 15 seconds at a time.

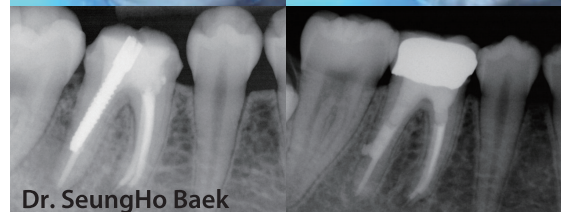


CK TIP-Needle

VIBRAPOST



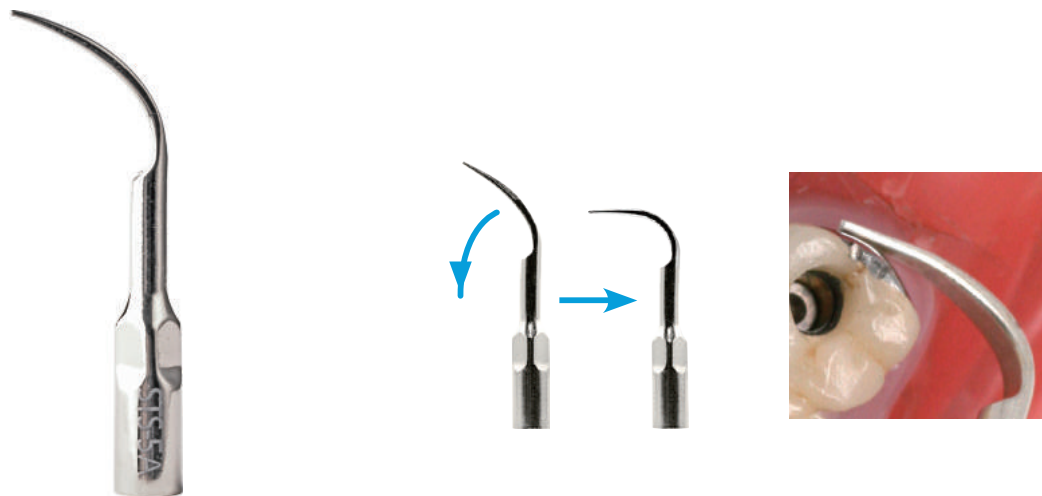
Dr. Jorge Vera



Dr. SeungHo Baek

Implant Scaler Tip

IS TIP



The dependable choice for peri-implant tissue management

Why choose B&L's implant scaler tip?

Metallic ultrasonic tip designed for scaling polished implant surfaces.

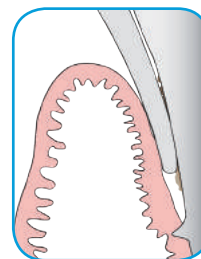
Compatible with electric piezo unit.

Optimal scaling efficiency with minimal abrasiveness to the external polished surface of the implant.

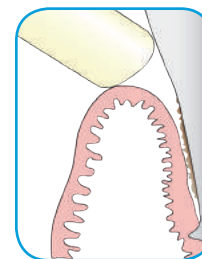
Ideal periodontal management of implant.

Safer and more efficient than other plastic and titanium implant curettes.

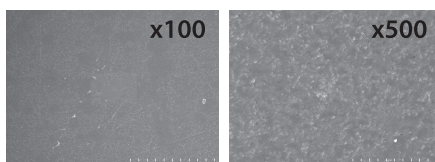
Ideal for removal of residual cement.



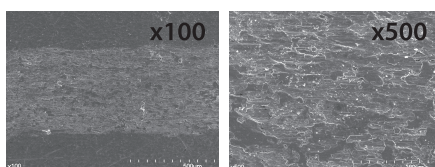
B&L IS TIP



Standard TIP



B&L IS Tip



Stainless Steel Tip

Sharpness

Avoids excessive opening of the gingival sulcus.

Usage

Ideal for periodontal maintenance of the implant.

Ideal for treatment of peri-implantitis.

Ideal for removal of excess cement.

Accessibility

Provides easier access to the distal lingual gingiva of a molar.

Bendable tip point can be used to reach hidden areas.

Disposable

Item Code

STS5A(SATELEC compatible)

STS5E(EMS compatible)

Reference

-Unursaikhan O, Lee JS, Cha JK, Park JC, Jung UW, Kim CS, Cho KS, Choi SH. Comparative evaluation of roughness of titanium surfaces treated by different hygiene instruments, J Periodontal Implant Sci. 2012;42(3):88-94

-Baek SH, Shon WJ, Bae KS, Kum KY, Lee WC, Park YS, Evaluation of the safety and efficiency of novel metallic ultrasonic scaler tip on titanium surfaces. Clin Oral Implants Res. 2012;23(11):1269-74.

-Chun KA, Kum KY, Lee WC, Baek SH, Choi HW, Shon WJ. Evaluation of the safety and efficiency of novel metallic implant scaler tips manufactured by the powder injection molding technique. BMC Oral Health. 2017;11;17(1):110

-Seol HW, Heo SJ, Koak JY, Kim SK, Baek SH, Lee SY, Surface alterations of several dental materials by a novel ultrasonic scaler tip, Int J Oral Maxillofac Implants. 2012;27(4):801-10

Microsurgical Ultrasonic Tip with Micro-projection

JETIP



JT-2S JT-2L JT-2R JT-2B

Bending Jig

Optional Length and Angle

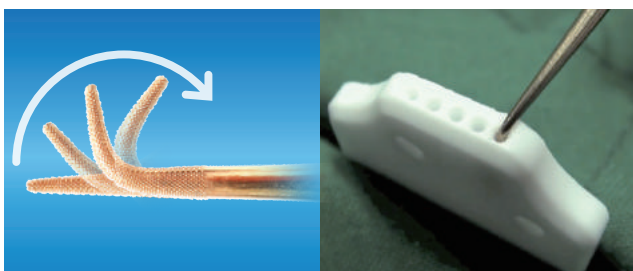
The Bending Jig is made of a soft material in order to provide clinicians the freedom to bend the JETIP to different angles and lengths without damaging the micro-projections.

The Bending Jig has five depths (3, 4, 5, 6, and 7mm) allowing clinicians to bend the tip to different lengths.

One aperture may be used up to 2-4 times.

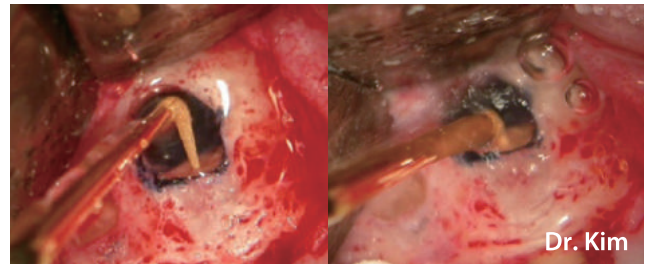
Bendable Apical Surgery Tips

JETIP is an apico surgery tip that allows clinicians to bend the tip to any length and angle to suit their surgical needs.



Versatility

JETips have a variety of shapes and sizes, so users can effectively control the amount of gutta percha and dentin removal. They remain stable during the removal of gutta-percha.

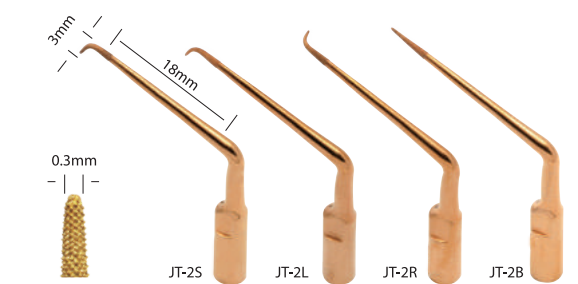


Longevity and Safety with Micro-projection

JETIPs have sharp, abrasive micro-projections integrated onto the main body of the tip.

Unlike conventional diamond-coated endodontic tips whose coating wears off during surgery, tips with micro-projections are more resilient and efficient in cutting.

Appropriate power level



SATELEC®	10% - 20%
EMS®	Under 10%

E-Type not available for sale in the US.

JT-2 series for Micro-Surgery (Anterior, Posterior)

Bent Body Angle: 150° (All JT-2 series tips)

Micro-projection Size: 50µm

JT-2S	90	down
JT-2L	90	to the right
JT-2R	90	to the left
JT-2B is Bendable Tip		

Item code

Full set : JT2FA(Satelec), JT2FE(EMS)

JT-2 : EMS

JT2SE(Straight), JT2LE(Left), JT2RE(Right), JT2BE(Bendable)

Satelec

JT2SA(Straight), JT2LA(Left), JT2RA(Right), JT2BA(Bendable)

Ultrasonic Tip Accessories



Bending Jig for JETIP Bendable Type

Item Code : JTBJ



Wrench for Ultrasonic Tips

Item Code : WR01

JETIP Instrument



JETIP Instrument Basic Set

JETIP Instrument for Microsurgery

- Color Coded by Procedural Steps
- Comfortable Grip
- Sleek Design

Basic Set (Aluminum or Titanium Handle) Item Code : JISSB / TJISSB

Silver	JX1, JX2, JX5, JEX, JPP
Gold	JE1, JE2, JE3, JE4
Blue	JC1, JC2, JC3, JC4, JC9, JC10, JC11, JC12, JC13, JC14, JC15, JC16
Green	JM1, JM2, JM3, JM4, JB2, JP3, JP6, JP7
Micro Mirror	JIMM1, JIMM2, JIMM3, JIMMH
MTA Pallet	MTAP
B&L Wrench	WR01
Cassette	JISC2

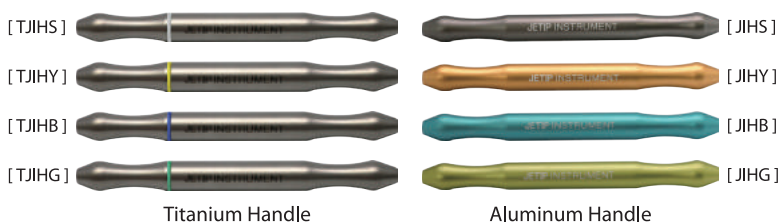
Essential Set (Aluminum or Titanium Handle) Item Code : JISSE / TJISSE



Silver	JX1, JX2
Gold	None
Blue	JC15, JC16
Green	JB2, JP3, JM3, JM4, JP6, JP7
Micro Mirror	JIMM1, JIMM2, JIMM3, JIMMH
MTA Pallet	MTAP
B&L Wrench	WR01
Cassette	JISC2

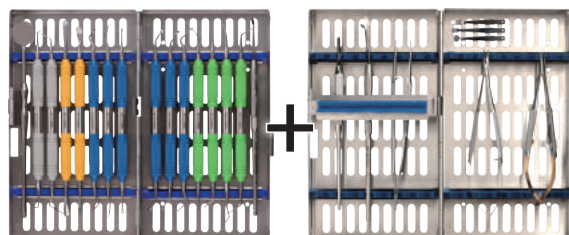
JETIP Instrument Handle

Titanium Handle Set & Aluminum Handle Set



Deluxe Set (Aluminum or Titanium Handle) Item Code : JISSD / TJISSD

JETIP Instrument Basic Set + JETIP Instrument Suture Set



List of JISS Tips



JX1



JX2



JX5



JEX



JPP

Endo Explorers (small size)

Dental Mirror

Endo Explorer (large size)

Periodontal Probe



JE1



JE2



JE3



JE4

Elevators



JC1



JC2



JC3



JC4



JC9

Curettes



JC10



JC11



JC12



JC13



JC14



JC15



JC16

Curettes



JM1



JM2



JM3



JM4



JB2

Retrofilling Carriers

Ball Burnishers



JP3



JP6



JP7

Micropluggers



MTAP

MTA Pallet

Silver Handle
(for examination)

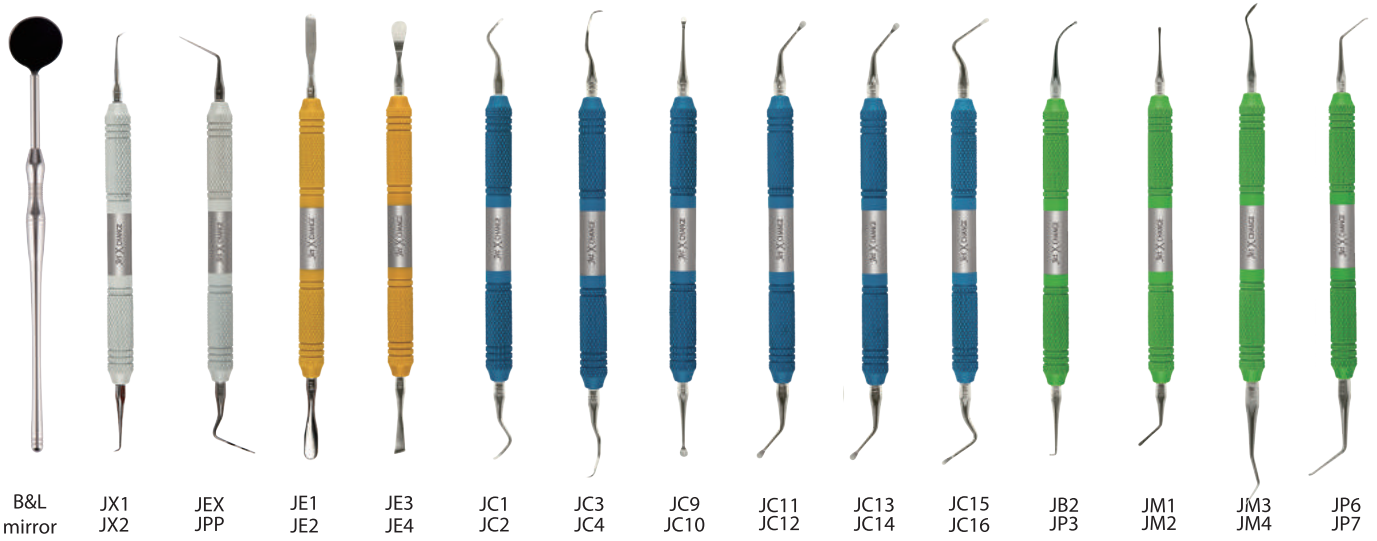
Gold Handle
(for flap elevation)

Blue Handle
(for curettage)

Green Handle
(for root-end filling)

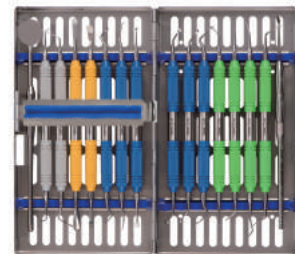
Microsurgical Instruments

JetXchange Instrument Basic set



JetXchange Instrument Basic Set for Microsurgery

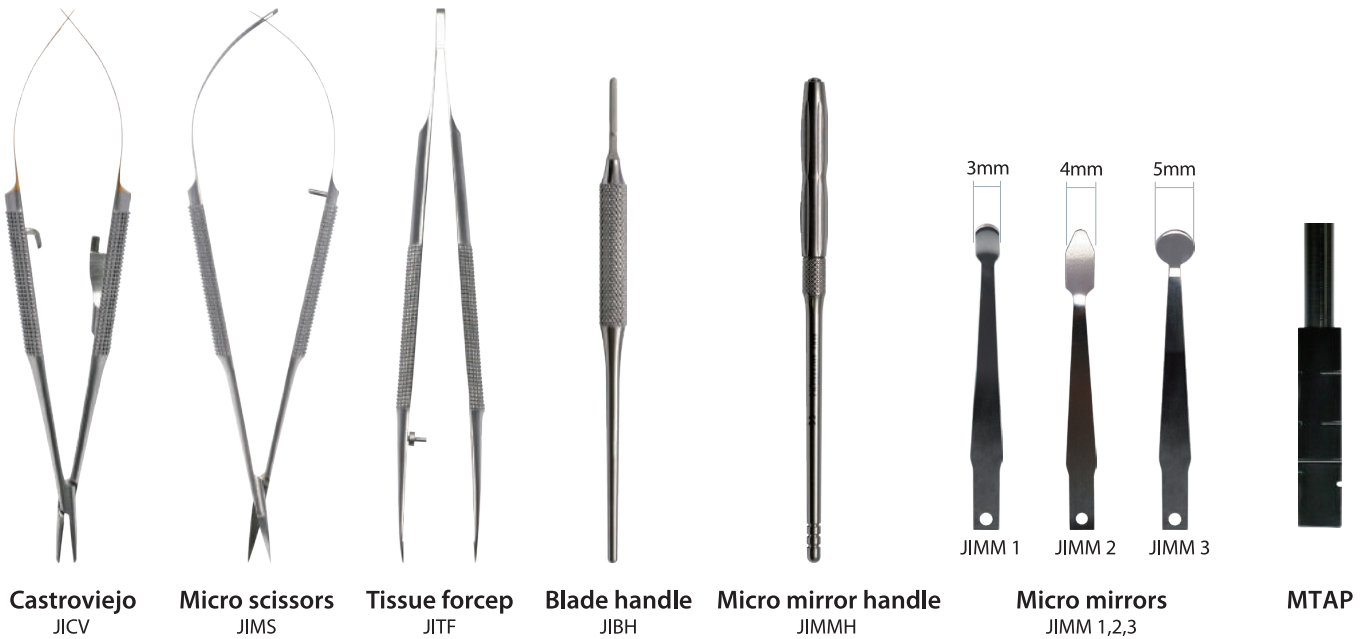
Customizable to your needs
 Lightweight and better grip



Item Code : JXSSB

Microsurgical Instruments

JETIP Instrument Suture Set



Suture Set for Microsurgery

Set of most used instruments - includes a castroviejo, a micro scissor, a tissue forcep, a blade handle, three micromirrors, a MTAP, as well as the micromirror handle.
 With high durability, it can be used longer despite many cleanings and sterilizations.
 The ergonomic grip helps a dentist perform surgery longer without fatigue.



Item Code : JISSS

Micro Mirror Set



Double-Sided Mirror

B&L Mirror



Package (10ea)

Item Code	Product Name
JIGM	B&L Mirror
JIGH	B&L Mirror Handle

Reflective Periosteal Elevator for Surgical Treatment

Leetrac

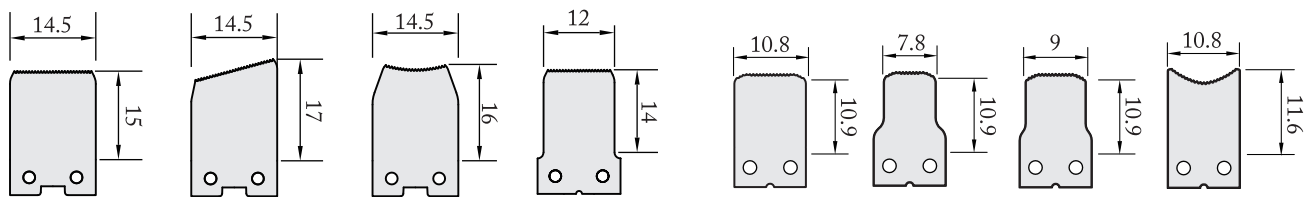


[Wide]



[Narrow]

Changeable Blade



Blade type

LTRBS

LTRBT

LTRBR

LTSBS

LTNBS

LTNBN

LTNBT

LTNBP

[Wide]

[Narrow]

Reflective Surface

The mirrored surface of the blade makes it easier to view the surgical area, without the need of a secondary tool.

Serrated Edges

Stably secures the cortical bone plate, regardless of its shape, due to the saw-toothed wheel at the end of each blade.

Various Shapes

Four different types of blade available for each wide and narrow handles. Each blade can be interchangeable depending on the needs of each surgery.

Item Code

Wide type

Set: LTRNS (LRTNH, LTRBS, LTRBT)

Handle: LRTNH(Wide handle)

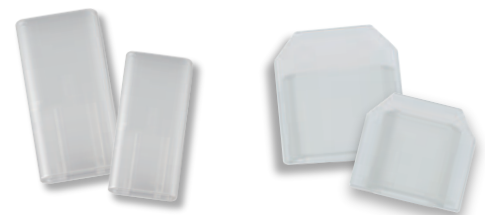
Accessory: LTRSS (Autoclaving cap 1EA), LTRWT (Leetrac wing 1EA)

Narrow type

Set: LTNNS (LRNNH, LTNBS, LTNBN)

Handle: LRNNH (Narrow handle)

Accessory: LTNSS (Autoclaving cap 1EA), LTNWT (Leetrac wing 1EA)



Autoclaving cap
(LTRSS/LTNSS)

Leetrac wing
(LTRWT/LTNWT)

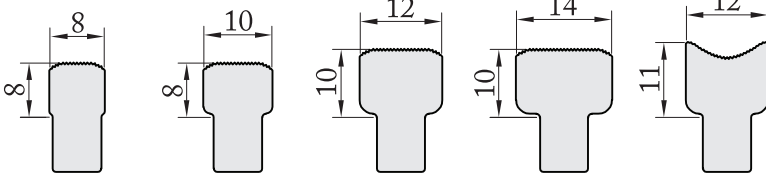


Bendable Retractor for Surgical Treatment

KimTrac

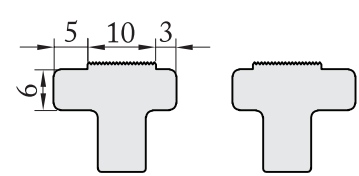


Endo Blades



Nitinol type	KTRM1N	KTRM2N	KTRM3N	KTRM4N	KTRM5N
SUS type	KTRM1S	KTRM2S	KTRM3S	KTRM4S	KTRM5S

Perio Blades



KTRP1N	KTRP2N
KTRP1S	KTRP2S

Shape Memory

After being bent, NiTi models can be returned to its original shape at 60°C or higher

Serrated Edges

Stably secures the cortical bone plate, regardless of its shape, due to the saw-toothed wheel at the end of the KimTrac.

Various Angles

Consists of three types of angles that make contact with the bony plate. It adheres well to both anterior and posterior locations by adjusting the left-right angle.

KimTrac WING

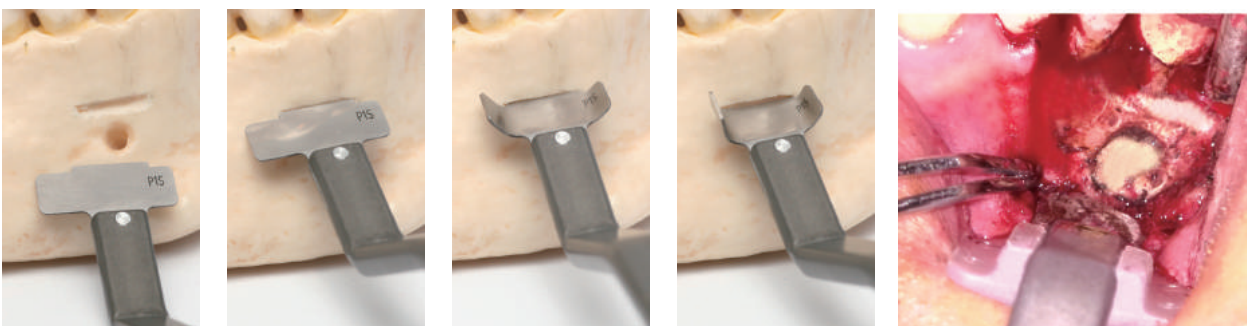
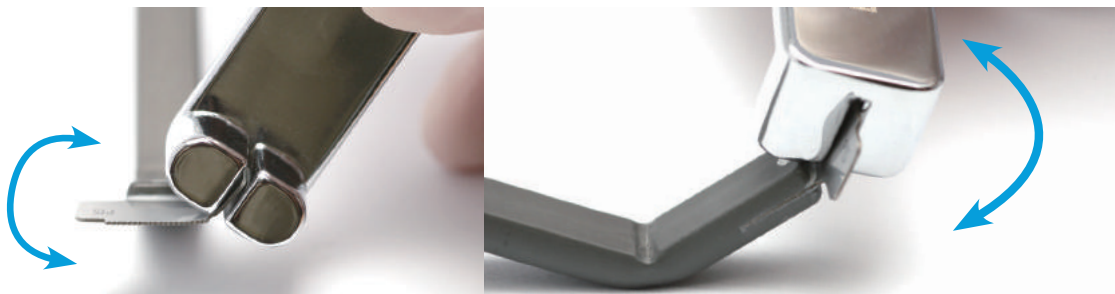
Autoclavable KimTrac Wings ensure easy flap retraction with highly improved visibility and accessibility of the operation field.

Item Code : KTW1(Wide type 5EA), KTW2(Long type 5EA), KBJ(KimTrac bending jig)

* KimTrac wings and the KimTrac bending jig are included with the KimTrac.



KimTrac Wing (KTW1/KTW2)



Contact Information

Global Sales

Bruce D. Shefsky
bdshefsky@bnlbio.com

Latin America Sales

Dr. Lissette Ramirez
drlissetteramirez@bnlbio.com

Repair Center

Global B&L Biotech, Inc.
sales@bnlbio.com

U S A B&L Biotech USA, Inc
customerservice@bnlbio.com



View video clips at <http://www.youtube.com/bnlbio>

B&L Biotech, Inc.

#502, 95 Gwangdeokdong-ro, Danwon-gu,
Ansan-si, Gyeonggi-do, Korea 15462
E-mail: sales@bnlbio.com
FAX: 031-401-4060

B&L Biotech USA, Inc.

3959 Pender Drive, #350, Fairfax, VA, 22030 USA
TEL: +1 (703) 272-7507
FAX: +1 (703) 272-7598





B&L BIOTECH

Where Innovation Meets Excellence

B&L Biotech USA, Inc.

3959 Pender Drive, #350, Fairfax, VA, 22030 USA
TEL: +1 (703) 272-7507 | FAX: +1 (703) 272-7598
WEBSITE: www.bnlbio.com

Where Innovation Meets Excellence

B&L Biotech, Inc.

#502, 95 Gwangdeokdong-ro, Danwon-gu, Ansan-si, Gyeonggi-do, Korea 15462
E-mail: sales@bnlbio.com | FAX: 031-401-4060
WEBSITE: www.bnlbio.co.kr